



Sponsored by the Rockridge Community Planning Council • 4123 Broadway, PMB 311 • Oakland, CA 94611 • 869-4200

RCPC and the Two Rockridge Safeway Projects

The Planning Department is studying two simultaneous construction proposals that could result in radically different Safeway stores for College Avenue and for the Rockridge Plaza at Broadway and Pleasant Valley. For different reasons, neither proposal in its present form is suitable for its proposed site.



Store” model. That model calls for minimum 50,000 sq. ft. stores with departments, such as a full florist, deli, bakery, and butcher shop, that go well beyond a traditional supermarket. Safeway wants its stores, regardless of location and local conditions, to each be the grocery equivalent of a Walmart “superstore.”

by *Stuart Flashman, RCPC chair*

Rockridge is unique, perhaps among all neighborhoods in America, in simultaneously having two proposals for expanded Safeway stores.

But these projects are not happening in isolation, and their simultaneity is far from random: Safeway has nationwide plans to expand stores to fit its “Lifestyle

Nor are Safeway’s Rockridge projects limited to larger supermarkets. Each is part of an even bigger shopping center project. The Broadway/Pleasant Valley store would be part of a rebuild-expansion that would add 119,000

► **RCPC & Safeway, page 10**

20 AGENDA
October RCPC Town Hall Meeting

■ **Oakland School Board President Jody London reports on the school district’s strategic planning process, entitled “Thriving Students.”**

Strategic planning now under consideration for the Oakland Unified School District (OUSD) will set the stage for the future of public education in Oakland. Board President London will discuss what that could mean for Rockridge schools, among others. She will also report on the current school closure plan.

Thursday, October 20 | 7:30-9 p.m.
Rockridge Branch Library, 5366 College at Manila



GRAB YOUR KIDS AND YOUR COSTUME: Halloween Parade Sunday, October 30

Continuing our neighborhood’s great, ghoulish tradition, the Rockridge District Association (RDA) and the Rockridge Community Planning Council (RCPC) invite you to celebrate Halloween on College Avenue. From noon to 2 p.m. Sunday, October 30, participating merchants will host trick-or-treating along both sides of College Avenue, from Alcatraz to Broadway.

noon, we’ll kick off trick-or-treating, leading the first group along the avenue. Then, at 1 p.m., return to Halloween Central for spooky storytelling and silly, scary sing-alongs. Storytellers will spin yarns in front of the Presbyterian church.



A happy Halloween parader from a past event. /RN file

To join the costumed procession, meet at Halloween Central in front of the College Avenue Presbyterian Church, 5951 College Avenue, at 11:45 a.m. At precisely

Don’t miss this holiday fun for kids of all ages.

PROS AND CONS: LWV AND RCPC PRESENT A SPECIAL ELECTION FORUM

LWV LEAGUE OF WOMEN VOTERS® OF OAKLAND

& RCPC

Thursday, October 27, 7:30 – 9 p.m.
Rockridge Branch Library

Oakland Sets Special Vote-by-Mail Election

Early in October, Oakland voters will receive a ballot for the city of Oakland Special Vote by Mail Election. The ballot will include information about the three

measures on the ballot. To help Rockridge residents be as informed as possible, RCPC is sponsoring an election forum to be presented Thursday, October

27, 7:30–9 p.m. at the Rockridge Branch Library by the League of Women Voters of Oakland (LWVO). LWVO will conduct an

► **Pros & Cons, page 5**

Pillars of Community Rebuild Community Pillars

Before Rockridge was a neighborhood, two hand-hewn stone pillars flanked the entrance to Regent Street at Alcatraz Avenue, a part of the area known then as Fairview Park. Over time, one pillar crumbled and the other was destroyed by a car. Late in 2010, neighbors, led by Jim Morgan and Emily Stoper, began a community fund drive to restore the pillars. Unforeseen obstacles were overcome with the assistance of Councilwoman Jane Brunner, her staff and the Department of Public Works. Last month, the new pillars were joyfully dedicated at a neighborhood ceremony.

Read the full story at <http://oaklandnorth.net/2011/09/19/fairview-park-residents-rally-to-restore-stone-pillar/>, an on-line Cal Berkeley School of Journalism publication.

Below, Emily Stoper addresses neighbors at the dedication ceremony. Center right, Chuy, stonemason with Hans Thiering Masonry of Alameda, works on the pillar. Lower right, Jane Brunner who helped move the project along.

PHOTOS COURTESY OF ALEXANDER HAUPTMAN AND CAROLE HOWARD



ROCKRIDGE BRANCH LIBRARY

5366 College Avenue

597-5017

HOURS:

Tues: 12:30 – 8 p.m.

Weds, Thurs, Sat: 10 a.m. – 5:30 p.m.

Friday: 12 – 5:30 p.m.

CLOSED: Sundays and Mondays, also Sat, 10/8.

Library program details: See Calendar, page 15.

THE Rockridge News

The Rockridge News, founded in 1986 by Don Kinkead, is published monthly in Oakland and is sponsored by the Rockridge Community Planning Council (RCPC), a nonprofit public benefit organization founded to: preserve and enhance the unique character of the Rockridge neighborhood; promote the health, safety and quality of life of its residents; furnish a forum for community involvement, and provide leadership and representation of neighborhood interests.

Rockridge News Production

Don Kinkead.....Editor
Ortrun Niesar.....The Muse
Barry Kaufman.....Food
Jo Ellis.....Advertising & Community Calendar
Theresa Nelson.....Neighborhood Merchant
Susan Montauk.....Business Manager
Don Kinkead.....Graphics & Layout

RCPC Board of Directors, 2011-2012

Stuart Flashman.....Chair
Vacant.....Vice-Chair
Michael Kan.....Secretary
Cesar Angobaldo.....Treasurer
Andrew Charman.....At-Large Exec Comm.
Christopher Chin, Annette Floystrup,
Jonathan Gabel, James Kachelmeyer,
William Kaufner, Don Kinkead, Alex Naughton,
Ronnie Spitzer, Ann Winterman

Contact the Board: chair@rockridge.org
For information: info@rockridge.org

NEWSLETTER SUBSCRIPTIONS

To subscribe to **The Rockridge News**, send your check for \$20, payable to Rockridge News Subscriptions, to: Rockridge News Subscriptions at the address below.

CONTACTING THE ROCKRIDGE NEWS

- Are there community issues you'd like to see covered in **The Rockridge News**?
- Do you have questions about newsletter distribution?
- Want to volunteer to be a **Rockridge News** block captain?
- Would you like to write a letter to the Editor?

Contact us at one of the following:

Editor: editor@rockridge.org
www.rockridge.org

The Rockridge News, 4123 Broadway, PMB 311, Oakland, CA 94611

RCPC Voice-mail: 510/869-4200

Articles submitted for publication may be e-mailed to the above address. Submissions are limited to 600 words; must include the author's name, phone number, e-mail address, and city or neighborhood of residence; and are subject to editing. To reprint a Rockridge News article, please contact the editor.

NEWSLETTER ADVERTISING/DEADLINES

Publication date of the next issue is

November 5, 2011

November deadline is October 20, 2011.

Advertising rates are \$26/column inch. Six-month pre-pay rate available. For display ads, call Jo Ellis at 653-3210 (after noon), or e-mail joellis1@hotmail.com. RCPC reserves the right to refuse any display or classified ad that it deems inappropriate. (Classified ad contact, page 14.)

RCPC Announces Board Vacancies

Due to the recent resignation of a board member (Ashley Etling), the RCPC Board of Directors has a vacancy it seeks to fill. If you are interested, send an e-mail to chair@rockridge.org, or leave a message

with your contact information at 869-4200. RCPC is also looking for additional members for its land use committee. Again, send an e-mail or leave a message if you are interested.

Wonderful, ongoing, weekday classes for babies or toddlers

KINDERGYM

A Movement Program for ALL Families

Drop-ins or sign ups for ALL families: songs, slides, tunnels, parachute play, bubbles, a fab ball pit, rocking horses & more!

For 9 months up to 3 years with an adult

Dawn Margolin | 510.547.7726

Temple Beth Abraham
327 MacArthur Blvd., Oakland
(near the Grand Lake Theatre)

www.tbaoakland.org/kindergym

Tired of Managing Your Rental Property?

Try Peace of Mind Instead...

Contact the professionals at Caldecott Properties to kick-start a conversation.

Ron Reece, Realtor®
Director, Property Management
510.594.2400 x226
rreece@caldecott.com

Caldecott PROPERTIES

CALDECOTT.COM

Shopping? Find it in Oakland!

Report: September RCPC Town Hall Meeting; Considerations in Renovation

Experienced Renovators Offer Project Advice

by Natalie Mehta, RCPC Kitchen Tour chair

Thanks to a knowledgeable panel of experienced renovators, those that attended the September RCPC Town Hall meeting walked away with some great advice for their next renovation project. If you missed the event in person, here are some of the key insights:

Be a steward of the house

Think twice before embarking on a project that doesn't consider your home's character. Al and Sharon Flor, owners of a home on this year's kitchen tour, consider themselves "stewards" of their house. It has been standing longer than they have, and will continue after they are gone, so their renovation projects are guided by a desire to preserve and enhance their home. While their project incorporated modern conveniences, their finish selections complement the original elements of the home, making it appear seamless.

Stay away from the "edges" of design

While shelter magazines are filled with inspiring ideas and the latest styles, it's important to realize that many elements of a kitchen are fixed and difficult to change once installed. Ron Kriss, owner of Lawton Associates and a seasoned developer, reminds us that today's current style could be tomorrow's avocado/harvest gold reno-



Town Hall panelists Ron Kriss, left, Michelle Medeiros, Al Flor, Sharon Flor, and Burt Alper discuss considerations for successful kitchen and home renovations.

PHOTO: S. FLASHMAN

vation candidate. If current styles and color palettes are important to you, incorporate them into your project through more easily changeable elements such as light fixtures, accessories, and wall paint. By keeping the basic elements timeless, you'll ensure the renovation will stand the test of time.

Plan ahead

The easiest way to cut down the time span of a renovation is to have a specific plan in place before demolition starts, and to have all the materials on site. Michelle Medeiros, of Integrity Remodeling, counsels clients to invest the time up front to have a thorough and complete plan so that everyone is working towards a common goal. The straight path is always faster than the meandering one, so if your heart is set on having a pot-filler above the stove, don't wait until the counters are in and the tile is up to mention it. While it still may be possible to install, it will most certainly be time-consuming and much more expensive to put it in during a late stage in the project. By planning ahead, you ensure that your heart's desires are incorporated in the most timely and cost-effective manner.

Work only with professionals you trust

You know to ask friends for referrals and to check at least three references before hiring a contractor. And for safety and liability purposes, it's important to work only with licensed, insured, and bonded contractors who will get permits for your work. But you should also do a "gut-check" to see if you have a good personality fit with your contractor. This is someone you may be seeing first thing in the morning, before your shower and coffee, so make sure you feel comfortable with them being in your house, among your private possessions, and with your family. It's a complex and intense relationship, and one in which trust is a necessary element.

Schedule a major event

To avoid the "7 Stages of Done" where your project is always "just a few" weeks away from being complete, Ron Kriss suggests planning a big party or event in your home close to the deadline. There's nothing like a looming and definite deadline to keep a sense of urgency among all the parties involved.

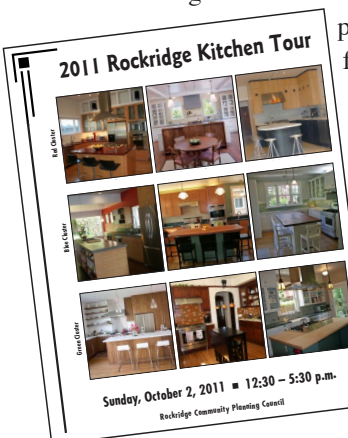
Preliminary Report: The Rockridge Kitchen Tour a Total Success

Early indications are the 2011 Kitchen Tour was a great success. Creating a page for a fundraising cookbook,

this recipe was mixed with one sunny Bay Area Sunday sprinkled with cooling zephyrs out of the west. With 500 or so good-humored Tour guests strolling through Rockridge neighborhoods stirred in, the event rose to

the occasion, leavened by the organizing skills of Tour Chair Natalie Mehta.

Congratulations and thanks to all the dedicated volunteers who gave so generously of their time and talent.

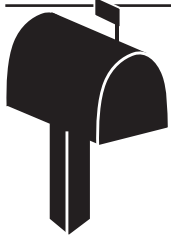


◀ Tour guests enter a Harwood Avenue home.

▶ Guests discuss kitchen improvements and renovation ideas with Presley Way homeowner Jill Foley.

PHOTOS: D. KINKEAD





Letters to the Editor

The Rockridge News welcomes letters to the editor. Your name, address, phone number, e-mail address and city/neighborhood must be included for verification. Only your name will appear with your letter. Letters may be edited for clarity and brevity at the editor's discretion. Views expressed in any letter are the writer's own, and may not necessarily be shared by the editor, or by RCPC.

NOISE LEVEL FINDINGS IN SOUNDWALL FEASIBILITY STUDY ARE FLAWED

EDITOR:

You may have read my comments in the article "Sound Walls Bound for Rockridge?" in the August 3 East Bay Express, or heard them on the August 5 KPIX-5 6 O'Clock News. I now have a website that highlights some of the issues that the Rockridge News has not addressed in its series of articles on soundwalls. For example, your readers might be interested to know that the measured noise levels in most of Rockridge are below the threshold required for soundwall construction.

For details on this and links to lots of relevant sources of information, please visit www.RockridgeSoundwalls.org.

— **Jon Gabel, Rockridge resident**

EDITOR'S NOTE:

On his web site, reader Jon Gabel questions the methodology and findings of the study of sound levels along Highway 24 completed in 2009 by acoustical and vibration consultants Wilson, Ihrig & Associates for Caltrans. RCPC Chair Stuart Flashman invited study author Steven Wolfe to comment on the assertions appearing on Gabel's web site. Wolfe's reply:

DEAR MR. FLASHMAN:

This letter is to go on the record as far as Wilson, Ihrig & Associates's (WIA) position regarding soundwalls in the Rockridge area adjacent to SR 24 and on our Pre-NBSSR (Noise Barrier Scope Summary Report) Study that we completed for Caltrans in 2009.

There seems to be confusion by some

regarding the basic purpose and particularly the results of the study. First, WIA has no interest whatsoever regarding the outcome of such a study. Second, we did not develop the methodology of the study nor provide input on the accuracy of studies using the methodology prescribed by AACMA or Caltrans. It should be understood that a Pre-NBSSR study is just a preliminary study to determine if soundwalls have any merit. Further study is certainly warranted and that is understood or should be understood by all involved parties.

The study basically entailed reviewing previous Caltrans studies from the Caldecott Tunnel to I-580, obtaining existing noise levels at a number of locations along SR 24, locating affected receptors, projecting peak hour noise levels to these receptors to determine the potential need for noise mitigation, estimating soundwall effectiveness (where warranted), estimating preliminary soundwall costs using Caltrans developed spreadsheets, and preparation of a report presenting the results of the study.

Our understanding is that there are both those who are in favor and those who oppose soundwalls adjacent to SR 24 in the Rockridge neighborhood. Ultimately, it is the community that will decide if such soundwalls are actually implemented after

a more detailed and accurate study of the existing and future noise levels in the area is prepared, the technical justification for such walls is demonstrated and potential funding identified.

We stand by our report prepared in 2009 and encourage careful review of the assumptions and conclusions with the understanding that this was a very conservative study, to identify all areas where soundwalls can be justified based on the criteria specified by AACMA and Caltrans.

Wilson, Ihrig & Associates, Inc.
Steven L. Wolfe President and
Principal Consultant

Ed. Note: The Oakland settlement money [The Rockridge News: May, 2011, page 5] provides funds for the more detailed and accurate soundwall studies mentioned in Wolfe's response.

LUCY ARMENTROUT



Please review my blog at
FineEastBayHomes.com
510.339.0400/349

The GRUBB Company

Praying - Serving - Growing

**St. Augustine
Roman Catholic
Church**

400 Alcatraz Ave.
Oakland
(between Telegraph
and College
Avenues)
510-653-8631



Mass Schedule

Saturday: 5 p.m.
Sunday: 8 a.m.
& 10:30 a.m.
Weekdays: 8:30 a.m.

Reconciliation

Saturday, 4 p.m.

www.staugustineoakland.com

What's your idea of college prep?

open house
Saturday, November 12
Saturday, December 3

Please reserve your space by calling
510.652.4364 or visiting
college-prep.org/openhouse.
We look forward to meeting you!
The College Preparatory School
6100 Broadway Oakland CA 94618 510.652.4364 college-prep.org

RCPC Land Use Committee

The RCPC Land Use Committee meets on the fourth Wednesday of the month at the Rockridge Branch Library, Upstairs Meeting Room, 7:30 p.m. Next meeting: October 26; it will include further discussion of the two Safeway projects. Subject to change. Check rockridge.org the preceding week for the full meeting agenda.

Land Use Update

by Stuart Flashman, RCPC Land Use Committee chair

College Avenue Safeway Shopping Center; (Corner of College and Claremont Avenues)

The Planning Commission's design review committee has scheduled a public hearing on this project Wednesday, October 12, starting at 5 p.m. in hearing room #1 at Oakland City Hall. The three members of the design review committee are Madeleine Zayas-Mart (chair), Chris Patillo (vice-chair), and Michael Colbruno. This design review hearing is the time to talk about how Safeway's proposed project would look and function, not about how it doesn't fit the zoning or about the traffic it will generate. However, it is an appropriate time to talk about, for example, how it fits in (or doesn't) to the surrounding area, the wide driveway breaking up the College Avenue sidewalk, the blind wall and parking lot along Claremont Avenue, the (non)functionality of the second

floor outdoor seating area overlooking the Claremont/College intersection, and whether having a grocery store on the second floor really makes sense.

Rockridge Shopping Center Reconstruction Project; (Corner of Broadway and Pleasant Valley)

This project is also proposed by Safeway, but by a different division than the one doing the College Avenue shopping center. It would rebuild the entire shopping center and add 119,000 sq. ft. of developed space. Release of the draft Environmental impact report for the project has again been delayed, probably at least until the end of October. We suspect that the cause may be problems with the traffic analysis, which was done by the same firm that did the traffic section on the College Avenue Safeway DEIR. Check the RCPC web site at <http://rockridge.org> for the latest update, or sign up for the RCPC e-newsletter for more immediate notification.

The Oakland planner is Daren Ranelletti; 238-3663; e-mail DRanelletti@oaklandnet.com.

Pros & Cons

from page 1

impartial pros and cons review of the ballot measures to be voted upon in the election on November 15. As described on the city's web site, the measures are:

- **Measure H:** Shall the Oakland City Charter be amended to return the City Attorney to an appointed position?
- **Measure I:** Shall the City of Oakland establish a five year temporary fiscal emergency parcel tax to preserve essential city services, including fire, police services, and police technology, youth violence prevention, library, services, parks and recreation, and street repair, by establishing an \$80 parcel tax for single-family homes and specified amounts for multi-family and commercial properties with an exemption for low-income households?
- **Measure J:** Shall the Charter be amended to allow the City of Oakland to change the deadline for fully funding its Police and Fire Retirement Plan to a new financially responsible deadline?

The city's web site states that the registrar of voters will begin opening and counting ballots on November 4; ballots must be received by November 15.

Voters may register to vote in this election through October 31.

Additional topics the speakers will cover include information related to the state election next June, specifically the new top two primary system, and how redistricting will affect Oakland.

The LWVO speakers are Megan Chenoweth and Katherine Gavzy, LWVO President.

The city's web site with election details is at <http://www2.oaklandnet.com/OAK030369>.

The LWVO web site address is: <http://www.lwvoakland.org/VOTER-October-2011.html>.



Mariposa
Gardening & Design
Design, Installation and Maintenance
Native Plant Gardens & Stonework

Andrea Hurd, Horticulturist and Stonemason
License #883905 * tel. 510.558.8429
www.mariposagardening.com

LOTUS CLEANING SERVICES
FOR HOME AND OFFICE



Non-Toxic Eco-Friendly
Housekeeping Auto Detailing
Office Cleaning Carpet Cleaning

(510) 452-0755
www.lotuscleaningservices.com
EXPERIENCED, LICENSED, BONDED AND INSURED

EXPERIENCE MATTERS

OASIS REALTY

Residential Real Estate



CALIFORNIA ASSOCIATION OF REALTORS®

Preston Grant
REALTOR
LIC R01375357

Direct 510.220.7908
preston_grant@oasis-realestate.com
www.oasis-realestate.com

Regency Antique Restoration
Professional and Experienced



ALL Furniture Repairs
In-Home Services
New finishes & waxing
FREE ESTIMATES
Pickup & Delivery
517-6280
Bruce Wagg
bruce@bayareaantiques.com

Chabot Elementary Annual Fall Carnival Creates Lasting Memories, Raises Funds

by Lyn Hikida, Chabot PTA

The Chabot Elementary Fall Carnival has been a Rockridge tradition for years, and the tradition continues this year Sunday, October 30, starting at 11 a.m. and carrying on to 4 p.m.

Excitement is building ahead of the event, which will be held on the Chabot campus amidst the recently remodeled school yards for the community to enjoy, complete with new play structures.

Traditionally, the carnival is viewed as the community event kicking off the school year. Each year, new families with school-age children enter the school and are greeted by this fun-filled day. Little brothers and sisters enjoy participating; there are games for all ages.

Back by popular demand are the rock climbing wall and dunking booth. Come dunk Principal Mayer or your favorite (or not-so-favorite) teacher.

As always, entrance is free. Enjoy a



family lunch from one of the food trucks, and play games to win prizes.

Dancing was a popular way to pass the time last year, and there will again be a live DJ all day and a cake walk hourly.

Remember to bring your best Halloween costume: Also back by popular demand, the kids' costume contest will be held at 1 p.m.

All proceeds benefit the Chabot Elementary PTA to fund enrichment programs like music, art, computers, the library and the garden; to coordinate numerous after-school programs; and to help in the classrooms.

Back to School for Chabot Bobcats

by Lyn Hikida, Chabot PTA

The school year at Chabot Elementary is back in full swing, and students returning from summer vacations discovered a number of campus improvements finished up at the tail end of the major construction project that began in 2008.

According to Chabot PTA Construction Liaison Shelly Fierston, the Cal Fire Air Quality Grant (part of the Caltrans Fourth Bore mitigation settlement) provided new plants between all major buildings, new ground cover throughout the lower yard, and a variety of fruit trees in the rejuvenated garden, all done during the summer.

Thanks to additional grant funding, a stepped seating/sculpture garden was constructed on the upper yard. The seating—which includes concrete pads of various heights and depths surrounded by native, drought-tolerant plants—accommodates outdoor learning as well as lunchtime and community gatherings.

On the lower yard, in an area that continually struggled with the effects of poor drainage, artificial turf was installed, courtesy of generous community support from the Chabot PTA. Students can now enjoy unrestricted play in this area throughout

the school year.

Chabot is proud to be part of the Rockridge community, and the PTA encourages neighbors to support our school every time you shop. Visit eScrip (www.escrip.com) to sign up and choose Anthony Chabot Elementary (ID # 118422370) as your group. Merchants such as Safeway, Andronico's, Piedmont Grocery, Village Market, Khana Peena, La Note, Pican, and Extreme Pizza all participate and help us raise more than \$4,000 annually by donations of a portion of each purchase. In less than five minutes you could be supporting us all year long!

For more info, visit www.chabotelementary.org.

Claremont Middle School Auction Helps Pay for School Programs

by Michelle Bilensky, Claremont PTA

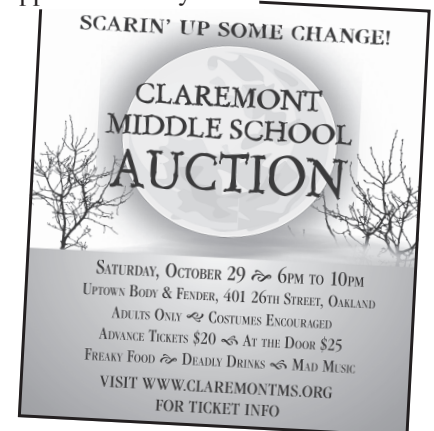
Scar in' Up Some Change at Claremont Middle School!, Claremont's annual party and auction, will be held Saturday, October 29, from 6 p.m. to 10 p.m. at Uptown Body and Fender, 401 26th Street, Oakland.

Everyone is welcome to come support our event to raise funds for the school. There are many school programs that need your support, including our band and orchestra, digital media and film animation courses, our garden, our art courses, and our library.

This will be our 5th annual auction. It is an adults only, Halloween-themed event. Last year we raised \$35,000; our 2011 goal is to top that. Tickets are \$20 in advance and \$25 at the door.

Contact parent Michelle Bilensky, mdb.pta.oakland@gmail.com, or visit the Claremont website, www.claremontms.org for ticket information.

As always, a special thank you to our local Rockridge merchants for their loyal support over the years.



(510) 428-0757

REALTY ADVOCATES

23 Years in Rockridge

Highest Sales Prices + Lowest Commissions

realtyadvocates.com

Fire!

On that fateful day of October 20, 1991, the noonday fire rose like a monster in the Oakland-Berkeley Hills above the Caldecott Tunnel. Fierce Diablo winds sweeping over the ridge and into the canyon created an instant firestorm that moved so fast, hill dwellers were taken completely by surprise.

Soon, flames jumped from tree to tree, lighting them like giant candles every 11 seconds; bounced from rooftop to rooftop until the hillside was lit up by thousands of little fires glittering, diamond-like, in the dark. Three days later 3,400 homes had been destroyed, 25 people were dead and another 150 injured. Sixteen hundred acres had been reduced to ashes. Damage was estimated at \$1.5 billion. The Claremont Hotel was saved.

Time Heals All Wounds

Natural and man-made disasters seem an unavoidable part of the human condition. Almost always unpredictable or unimagined, when they happen, our lives are put on hold as our trajectory is recalibrated. Then, after a while, it's everybody back to work! Time heals all wounds after all. But how much time? This fall we commemorate the 20th anniversary of the Oakland Fire of 1991. Is 20 years enough for healing? In the hills above Rockridge, the debris has been cleared away, houses and trees have sprouted where there was nothing but ruin and ashes.

I randomly asked people what they

THE Rockridge MUSE

by Ortrun Niesar

remember, how this seminal event affected their lives. I learned that it depends on where you stood physically and emotionally in relation to this disaster, whether you watched or were directly affected by the maelstrom.

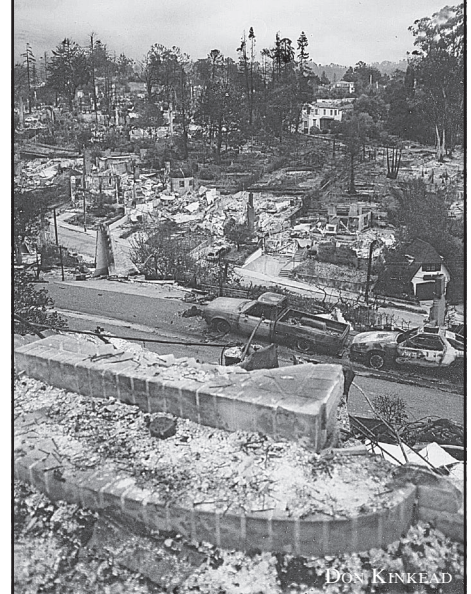
Those who did not live in the fire zone tell anecdotal stories, point to all those new huge, pink houses on the hills and perhaps remember that there was once a different, more rural kind of life up there. My teen age son remembers packing the things he wanted to save only to find to his amazement that his young life barely filled a shoe box of mementos. Further, those who have moved into the area since the fire are hard-pressed to know what it was all about and whether it has anything to do with them.

As I talked to people who lived in the hills at the time of the fire, I got either short, pained responses or longer, talk-it-out replies. The emotions are still raw, and the anger, the loss, the sense of helplessness in the face of disaster are palpable. Yet, one could also sense a real pride of achievement, determination, and of discovery of inner strength you

THE AFTERMATH



MARGARETTA MITCHELL



DON KENKAD

didn't know you had.

Up on the Hill, there is still an occasional empty lot, a lonely foundation, but most people have rebuilt out of sheer defiance or, as Margarettta Mitchell did, out of a refusal to let dreams and things of meaning and great beauty, reminders of the past, just die. Vallery Feldman and a host of North Hill dwellers found consolation in banding together to make a difference through active community involvement as the neighborhood rose anew from the ashes, focusing on creating a wildfire prevention district, undergrounding of utilities and opening Fire Station #7. Their stories can be followed at www.Northhillscommunity.org.

Some people, though, simply left, never to return. Others moved closer to College Avenue to feel safer, to be among people. Some lost their pets and never dared own another one. Many still never fail to say goodbye and silently ask for forgiveness of anyone leaving the house. To round out the picture, illness and disease frequently set in at

➔ Fire!, page 11

 **piedmont dental** | BY DESIGN
Dale Herrero, DDS & Jill Martenson, DDS

IMPLANT, AESTHETIC & FAMILY DENTISTRY

 "Hi! Jenner and Erin here with mommy and daddy reminding you to take good care of your teeth!"

New Patient Special : \$149
CALL TODAY!

INCLUDES A COMPLETE COMPREHENSIVE EXAM,
FULL MOUTH DIGITAL RADIOGRAPHS &
A SMILE EVALUATION.

Dr. Jill Martenson : Rockridge neighbor since 1999

a \$300 value!

1331 GRAND AVENUE, PIEDMONT, CA 94610 T 510 652 2911
piedmontdentalbydesign.com

Scenic Streets
of Oakland



PHOTO: PETER LUND

DaVita is drafting site improvements.

DaVita Joins Claremont Avenue Landscaping Efforts

by Diana Thomas, Scenic Streets

Scenic Streets, the volunteer group leading the renovation of Claremont Avenue near Highway 24, has announced that DaVita Dialysis Corporation recently pledged to join the campaign. DaVita occupies the former supermarket at 5354 Claremont Avenue, across the street from the group's recent landscaping along the highway 24 off-ramp.

"We are very pleased that DaVita is joining with its neighbors to improve the appearance of this important gateway to Rockridge and Temescal," says Scenic Streets founder Peter Lund. The group contacted DaVita's Denver headquarters last spring, asking the company to spruce up its property.

Scenic Streets requested that DaVita remove unused signage remnants from the northwest corner of its parking lot and add landscaping along Claremont Avenue and Clifton Street to improve the facility's street view. DaVita spokesperson, Mollie

► Scenic Streets, page 14

Uproar Over Unannounced Tree Cutting Leads DMV to Cooperate on Replanting



PHOTO: MIST GROVES

In the aftermath of its unannounced tree removal and brush trimming in the DMV parking lots, leaving debris that caused Temescal Creek to overflow, the DMV now plans to work with the community to develop a replanting design.

by Theresa Nelson, FROG chair

Many Rockridge residents were startled when, in mid-August, 14 trees and several native plant shrubs in the DMV (Department of Motor Vehicles) parking lots at Claremont, Cavour and Miles avenues and traversed by Temescal Creek, were cut down or trimmed without prior notice.

The work – and the extent of it – surprised residents living nearby. Clumps of chipped eucalyptus the loggers left along Temescal Creek blew into the water and blocked the grating, causing backups and some flooding.

The tree felling and severe bush pruning drew a flurry of concerned phone calls and e-mails from DMV neighbors, Farmer's Market patrons and Frog Park users who expressed their concerns to Councilmember Jane Brunner, Assemblymember Nancy Skinner, and to the DMV.

The DMV heard the concerns, and hired Arborist Steve Batchelder to develop a planting plan that will be presented at a community meeting, date to be determined. A second meeting date to finalize the plan will be held, setting the stage for re-planting in November in time for the rainy season.

Planting will be in the DMV parking lot, some near the Farmer's Market area, and some in the Frog Park and Temescal Creek areas.

Check the FROG website – www.frogpark.org – for the dates and locations of the community meetings. You may also contact Jane Brunner's staff member, Elinor Buchen, at 510/238-7240, or e-mail EBuchen@oaklandnet.com.

Provide your input for the plan by leaving a comment on the FROG web site and/or by e-mailing your comments to DMVreplanting@frogpark.org.

WINSTON'S PLUMBING
HEATING & ELECTRICAL

lic # 537739/554406
Since 1979

- Trenchless Sewers
- Earthquake Protection
- Tankless Water Heaters
- Remodel & Repair

510-652-8014
www.winstonsplumbing.com

"May your toilet never runneth over!"

elizabeth

H

The art of hair, skin
and nail design

* 5431 College Ave
Oakland Ca 94618

* 510. 652. 5431

* www.elizabethh.net

Rockridge only transactions closed by Perry in 2010-2011 year

123Sheridan.com	\$1,435,000	5485Taft Ave	\$1,085,000
121Sheridan.com	\$1,505,000	5339James.com	\$710,000
BenvenueCourt.com		400 Avon St # 1	\$360,000
6403 Benvenue	\$975,000	400 Avon St # 4	\$359,000
6405 Benvenue	\$1,150,000	5809 Ross	\$1,200,000
6407 Benvenue	\$1,100,000	5387Miles.com	\$832,000
6409 Benvenue	\$995,000		

Perry Riani, Senior Associate

510.813.3799 priani@earthlink.net DRE# 01402540

Call for a real local expert opinion.

LAWTON
LLC
ASSOCIATES
REAL ESTATE
BROKERAGE

Peralta Elementary Recognized as a Blue Ribbon School

by Heather Ashcroft, Peralta PTA

Students and staff at Peralta Elementary are bursting with pride this week after Peralta, a public school in North Oakland, was recognized as a 2011 National Blue Ribbon School. Peralta is one of just two schools in Alameda County, and one of 21 in California, to be honored this year.

The U.S. Department of Education presented the award to 305 public and private schools nationwide for their overall academic excellence or for their success in closing achievement gaps. Peralta is categorized as an Improving School, where at least 40 percent of the student population from disadvantaged backgrounds has improved reading and math performance to high levels.

Principal Rosette Costello attributes part of that success to a focus on art. Peralta's artists-in-residence collaborate with teachers to incorporate art into all areas of study. An example of the children's art can be seen at the Días de los Muertos (Days of the Dead) exhibit at the Oakland Museum, October 12 through December 11. Peralta is one of three community groups invited to create a traditional altar, or *ofrenda*, to be on display at the museum.

With continued cuts to public school budgets, Peralta relies increasingly on grants and fundraising events such as a walkathon and auction to support student enrichment programs.

For the Peralta community, the addition of a National Blue Ribbon flag against that colorful backdrop will symbolize the school's use of art to inspire each child's success.

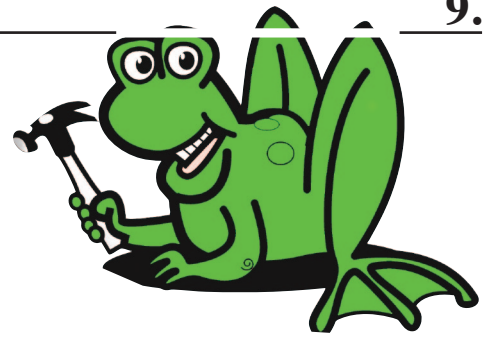
Celebrate 10 Years of Frog Park!

by Theresa Nelson, FROG Chair

It was only 10 years ago, in mid-October, 2001, that community volunteers finished building the two custom play structures at Frog Park.

The park has become a central feature of the neighborhood, but prior to 2001, the area was mostly a fenced and heavily-weeded place with no play structures, no swings, no water fountain, no bathroom, no pathways, no plantings, no ADA-accessible play features, dilapidated basketball courts, and of course, the dog park, popular since the mid-1990s.

More than 1,300 local volunteers came for 10 days to work from dawn until after dark to build the custom-designed play structures. Every bit of wood and ChoiceDec, every screw and nail, the mosaic turtle and walls, every painted wooden butterfly, flower or leaf, and all the fencing was built by community volunteers who gave their time and energy to make this park a reality. More than 1,000 tools were lent for the Big Build; we offered childcare so parents could participate in the build; and we fed everyone lunch, dinner and snacks from a field kitchen set up in the park. People took off from work to serve as captains for the entire build, working with groups of volunteers from throughout Oakland, as well as local corporations, garden clubs, U.C. Berkeley and high school students, the Junior League, Oakland Firefighters, and many more.



2001: Hardy Park Big Build participants celebrate their playground construction progress. PHOTO: BILL CALDWELL

A few years later, more volunteers continued to improve the park. They helped ensure that the mural on Claremont was restored, they guided the plans for Phase two (2006) to complete the path, add swings, re-do the basketball courts and secured funding to build the long-awaited bathroom at Hardy Park. The Frog Park volunteers created an enduring legacy for future users. It's a delight to see the new generation of families who appreciate the park as an important part of community life.

Now you can do something to help sustain Frog Park for the next 10 years! Please consider making a special 10th anniversary gift to support park improvements and maintenance. You can go to the park's web site to donate online at www.frogpark.org, or send a contribution to: Frog Park, 4123 Broadway PMB 311, Oakland, CA 94611. The builders of Frog Park from 2001 and beyond thank you for your support for the park and the community.

For more photos, go to Frogpark.org and check out the flickrfeed

AMATO ARCHITECTURE

Rebecca Ivans Amato, AIA 510.420.0210
AmatoArchitecture.com



Lullabies and songs of reflection from Europe & the Middle East



Available now at Child's Play, 5858 College Ave.

"gorgeous harmonies and lyrics"
www.lullaymysweetone.com

a cross-cultural congregation striving to partner with the Rockridge community in lifestyle and service.

College Avenue Presbyterian Church
5951 College Avenue, Oakland 510 658-3665
SUNDAY WORSHIP 10:30 AM • VISIT: CAPCCHURCH.ORG
OUR WONDERFUL COMMUNITY MEAL, FRIDAYS, 6-7PM
A GREAT OPPORTUNITY TO SERVE

RCPC & Safeway

from page 1

sq.ft. and some structured parking to the Rockridge Shopping Center. The College Avenue Safeway project would also include eight “small shops” totaling about 12,000 sq. ft. of added retail and restaurant space, plus a 175-space enclosed garage.

RCPC’s attitude towards these projects tries to reflect that of the Rockridge community, and, unlike Safeway, to take into account local conditions and what makes most sense for the community. Our positions reflect input from community meetings, discussions by RCPC’s land use committee and board of directors, and other community groups.

There is little question the existing 22,500 sq.ft. 1960s-era College Avenue Safeway store could use updating. Most other East Bay supermarkets from that era have either been refurbished, replaced, or re-used for other purposes. For example, the former Safeway store on Claremont Avenue – also in Rockridge – is now a dialysis center. However, College Avenue’s general plan designation and zoning (neighborhood center mixed-use and CN-1, respectively) reflect an understanding that College Avenue, as a two-lane street with little potential for expansion, is not a good place for large-scale development. Its focus is on pedestrian-oriented comparison shopping, with an emphasis on small, locally owned specialty retail shops. That approach has been spectacularly successful, and College Avenue is widely recognized as one of Oakland’s most lucrative neighborhood retail venues.

Kill Goose Laying Golden Eggs?

Safeway’s proposed 62,000 sq.ft. shopping center threatens to kill the goose that has been laying golden eggs for Oakland.

The recently-released draft environmental impact report for the project, even though grossly understating the project’s

traffic impacts, still found those impacts “significant and unavoidable.” RCPC agrees that the impacts would be highly significant, leading to near-gridlock on College Avenue at key hours and also creating potential safety and local air quality impacts, but they are *not* unavoidable.

While full mitigation isn’t feasible, there *are* project alternatives: A smaller project with a Safeway more on the scale of the company’s recently-rebuilt stores on Grand Avenue and in the Fruitvale District would diminish or even eliminate the traffic and other problems the proposal creates, while still providing an attractive and functional store more in keeping with College Avenue’s situation and zoning.

RCPC hopes that Oakland, in its approval process, will avoid unnecessarily damaging a successful retail area and, instead, tell Safeway to rethink its plans so they fit into, rather than overpower and destroy, Rockridge.

Rockridge Center Project: Different Circumstances

Safeway’s Rockridge Shopping Center Project at Broadway and Pleasant Valley is an entirely different story. The shopping center, on the edge of Rockridge and at the intersection of two major streets, is zoned for larger-scale commercial activity. It has been identified by Oakland as a “node” for new development. RCPC believes, as do other surrounding neighborhood groups, that *this* site is appropriate for – and merits – a major, urban, transit-oriented development effort. While Safeway’s revised project proposal at that site has moved in the right direction, RCPC believes it still suffers from major flaws:

- Its proposed “shopping street” simply doesn’t work well, either as a street or as a shopping area;
- The project turns a blind side to Pleasant Valley Road, leaving that streetscape dead and isolated;
- The project still has far too much

➔ **RCPC & Safeway, page 11**

THE ONLY DIFFERENCE IS THE PRICE!



“Cartridge World earned scores identical to those awarded to HP’s own ink”
PC World Magazine

*Based on evaluations of output from the HP Photosmart C5180 printer, inks from third-party challenger Cartridge World earned scores identical to those awarded to HP’s own ink, including an overall rating of Good.” PC World Magazine Article, 2008.

Start Saving Now!

\$2 OFF ONE INK REFILL	\$10 OFF ONE TONER REFILL
-------------------------------	----------------------------------

One per customer. Not valid with other offers.

510.428-9500
5940 College Avenue
www.cartridgeworldusa.com/Store197




rockridge OUT & ABOUT

College Avenue between Alcatraz and Manila
SUNDAY, OCTOBER 9TH, 2011 12-6PM

CHEF’S STAGE	57TH STREET GALLERY JAZZ
KID’S COURT	PICNIC IN THE STREET
OAKLANDISH HARVEST HOEDOWN	
WELLNESS AREA	ARTISAN ALLEY

SPONSORED BY

www.rockridgeoutandabout.com

pbgrealestate.com



SOLD!

PBG REAL ESTATE

5222 Shafter, Rockridge

2907 Claremont Avenue, Berkeley, CA 94705 • 510.843.6400 since 1997

Shopping? Shop Oakland, First

RCPC & Safeway

from page 10

surface parking. This land is too valuable to be used for parking lots. Other than a small amount of short-term “in-and-out” parking spaces, the rest of the parking should be in parking structures;

■ The center needs at least one other “anchor tenant” besides Safeway. Ideally that would be something much like the present Longs/CVS store. Alternatively, Safeway might look at a large hardware store, like Pastime Hardware in El Cerrito, or an entertainment complex like that at Bay Street in Emeryville;

■ The center needs much better and easier transit connections. This would be the ideal turnaround site for AC Transit’s 51A and B lines, especially with an on-site bus station that would also connect to Kaiser’s MacArthur BART station shuttle bus service.

In the long term, the site cries out for a residential component. It would tie together the neighboring residential areas and make for a more vital site. That’s apparently not possible under the current site lease, but there ought to be provisions to add housing in the future.

Best Opportunity for Success

RCPC is hopeful that both Safeway and the city will recognize that there’s far more to be gained from working with, rather than against, the surrounding community on these two major projects. Safeway’s two projects, done right, could offer a tremendous boost to North Oakland. Done wrong, they could damage one of Oakland’s most successful commercial and residential areas.

Fire!

from page 7

a later date, claiming more apparent victims, even though they may not have been counted.

These are all post-traumatic stress responses. It’s not over.

Memorials

There will be many events beginning mid-October, including exhibits at the Oakland Library History Room, 238-3222; the Oakland Museum, 318-8400; and the Berkeley Art Museum (BAM); 642-0808. Don’t miss the talks given by photographer Richard Misrach October 12, noon, at BAM. Also, UC professors Louise Mazingo and Richard Walker will discuss various sociological, economic and environmental aspects of the firestorm at BAM on October 30, 3 p.m.

Also, Margaretta Mitchell has produced a short film for the Institute for Historical Study for The Phoenix Firestorm Project. It is a film of disaster, yes, but also one of wonderful renewal as she and her family go about reconstructing their unique 1925 William Raymond Yelland Normandy Style home. The film will be shown at the Oakland Museum as part of the exhibit there. It is hoped that others will be inspired to come forward and contribute their stories to the project. For more information and donations to the project, contact Margaretta at mmkm@margarettamitchell.com or give her a call at 655-4929.

Visit the city’s web site for a detailed listing of memorial events: <http://www2.oaklandnet.com/Residents/OAK030313>

The Rockridge News Needs Your Help

Did you know we have 150 block captains, district captains and marshals who deliver the Rockridge News? Some of them have been doing their jobs since the first issue of the newsletter was delivered in March, 1986! It is inevitable that we lose volunteers to moves out of Rockridge, to family responsibilities, etc., but the News will continue to come to your doorsteps as long as we can find replacements for those volunteers. We hope that will be you!

Here are three routes that need block captains. Let us know the route number when you call or e-mail to volunteer: smontauk@gmail.com or phone 547-3855.


Route No.	Route Description
16D	To replace Block Captain: Rachel Rusting. Both sides 5200 Claremont, including apartment at 5248.
09H	To replace Block Captain Jennifer Gregovich Up Keith from McMillan to 5925 Broadway.
19C	To replace Jeannine Miles & Ella Sophia Miles-Urdan. 5400 Lawton between Forest and Hudson, and the apartment building at the end of Lawton next to Eddie’s Liquors.

local sustainable residential architecture

BUTTRICK WONG Architects

Jerome Buttrick, AIA www.buttrickwong.com
 Tim Wong, AIA 510.594.8700


Shopping? Find it in Oakland!



Realtor® Specializing in Rockridge

Saraya P. Motley

510-280-2162



Rockridge Shows Some Improvements Over Last Year!

Closing Date	BR	BATH	Address	Original Price	List Price	DOM	Selling Price
8/26/11	3	2	5401 Claremont Avenue	\$599,000	\$599,000	69	\$562,500
8/26/11	3	2	6409 Benvenue	\$1,020,000	\$995,000	152	\$995,000
9/2/11	6	4	6209 Colby Street	\$689,000	\$689,000	29	\$675,000
9/7/11	2	2	458 Hudson Street	\$1,250,000	\$1,175,000	16	\$1,155,000
9/9/11	5	2	323 Florence Avenue	\$769,000	\$769,000	58	\$811,000
9/13/11	3	2	6008 Auburn Avenue	\$1,150,000	\$1,150,000	13	\$1,100,000
9/16/11	2	1	5274 Manila Avenue	\$649,000	\$649,000	29	\$650,000

• Rockridge currently has a 2.7 month supply of inventory • Average list to sell is currently 96% vs 93% last year • Average market time before a listing sells is currently 52 days in Rockridge - compared to an average of 32 days a year ago
 • Median sales price is up, currently \$818,000 vs \$762,500 last year • Sales are up from 6 last year to 7 this year

Visit my website at www.eastbayhouse.com/
 If you're thinking of buying or selling, give me a call for a free consultation.

Young People's Symphony Orchestra Plans 75th Anniversary Gala

The Young People's Symphony Orchestra (YPSO), the second oldest youth orchestra in the country and with members from all around the Bay Area, is holding its 75th Anniversary Gala Saturday, October 22, at the Claremont Hotel. It will be a beautiful evening.

YPSO has played in Carnegie Hall, toured in China and in Australia and is touring in 2012 to Vienna, Prague and Bratislava. You are invited to come and/or send a donation to help raise money for scholarships, the 2012 International Tour and an endowment. One

for viewing on the web site before the Gala: www.YPSOmusic.net. A percentage of the proceeds will be contributed to the American Red Cross Disaster Relief Fund.

Single tickets are \$150; tables run from

\$2,500 to \$10,000. You can underwrite a full scholarship for \$1,300, or half a scholarship for \$650.

For more information about the Gala and YPSO, please go to www.YPSOmusic.net.

Details: YPSO Gala 75th Anniversary

Claremont Hotel: 41 Tunnel Road, Berkeley; **Saturday, October 22**

6:00 p.m.: Cocktail reception and silent auction

7:30 p.m.: Dinner and Program

Master of Ceremonies: Sedge Thompson, Public Radio Host and Producer


Distinguished Alumni and Honorees Include: Jeremy Cohen, Phil Lesh, Bonnie Hampton, Frederica Von Stade, and the Honorable Shirley Dean.

Live Music, including Aaron Requiró, Jeremy Cohen

Formal Attire/Black Tie Optional.

of the featured performers will be Rockridge resident and YPSO alumnus, violinist Aaron Requiró, nationally recognized for his outstanding artistry.

Silent Auction items will be available



Darin J. Worm
B R O K E R
510.504.4960
djworm@centurioninsurance.net

Centurion Insurance Agency
Commercial + Personal + Life + Health

*An Independent Insurance Brokerage
providing cost effective, comprehensive
Insurance products and services
since 1947.*

www.centurioninsurance.net
Lic. #0670129

Rockridge Optometry

Your neighborhood family eyecare providers since 1947

Dr. Donald Sarver
Dr. Larry Sarver
Dr. Scott Yokoi
Dr. Cindy Sakai

5321 College Avenue, Oakland
510-655-3797
www.rockridgeoptometry.com



HENDSCH

CONSTRUCTION

GREG HENDSCH
Certified Green Builder
Lead Safe Certified Firm
CA LIC #835138





SPECIALIZING IN KITCHENS & BATHS
HENDSCHCONSTRUCTION.COM 510.531.5602

Oakland born - Rockridge raised

Does your gym give YOU or your CHECKING ACCOUNT a better workout?


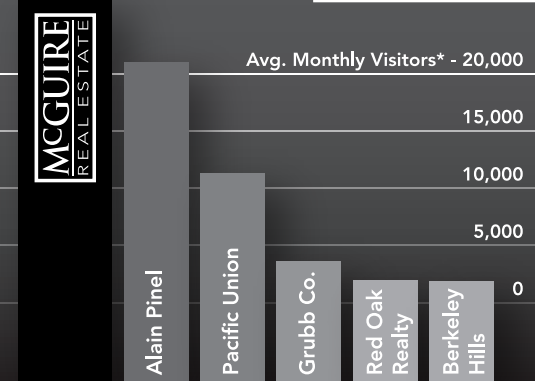


Check out **Inside Outside Fitness**
for pay-as-you-go exercise!

They'll keep YOU and your finances in SHAPE!

Bring in this ad for a free class - new members only!

(510) 655-8308
www.OutsideInsideFitness.com
4444 Piedmont Ave, Oakland, CA 94611

Agency	Avg. Monthly Visitors*
Alain Pinel	20,000
Pacific Union	15,000
Grubb Co.	10,000
Red Oak Realty	5,000
Berkeley Hills	0

Over 90% of all homebuyers are searching online.** And more buyers are searching on McGuire.com than any other Bay Area brokerage website.

We can help you reach the largest audience, it's as simple as that.

*Source: Compete.com (1 Year, through 02/11)
**Source: 2009 CAR Buyer Survey

510.622.8300 | 5327 COLLEGE AVENUE | ROCKRIDGE

Rockridge Branch Bids Farewell to 2011 Library Summer Intern

by Jane McDermott, Treasurer, Friends of the Rockridge Library (FORL)

Admittedly, Quinn Reedy-Schwarz had spent “zero” time at the Rockridge Branch of the Oakland Public Library prior to becoming this summer’s intern. In fact, Quinn had never been in a public library before. He feared that working at the library would be “geeky.” However, once he was established at the branch, his friends were very jealous. “They were like ‘whoa, this is really cool.’”

Since 2005, the Friends of the Rockridge Library (FORL) have underwritten the cost for a summer intern who, among other things, oversees the summer reading program and the volunteers who come with it. The summer reading program is an opportunity to get kids to keep reading and keep using the library. For reading eight hours’ worth,

participants are rewarded with coupons for such local attractions as Fairyland and Fenton’s Creamery. More than 1,000 local youngsters signed up for the program this summer.

The intern is selected from a pool of applicants comprised of high school juniors from Oakland Tech. The process is coordinated by FORL board member Tracy Weber and Oakland Unified School District (OUSD) guidance counselor Louis Thomas; the final selection is made by head librarian Pat Lichter, and librarians Gay Ducey and Erica Suskind. According to Lichter, what made Quinn stand out from the other 12 finalists was his experience at demanding jobs, his innate sense of curiosity, and his comfort in talking to people. The librarians believed that he would be at ease talking to both parents and kids – and he was.

For Quinn, who had done a variety of jobs mostly involving manual labor, coordinating volunteers was a big challenge. “Sometimes we had a lot of volunteers, maybe too many, and sometimes, like, one.” It was Quinn’s job to make sure that the Summer Reading Program desk was staffed and that the



2011 Library Summer Intern Quinn Reedy-Schwartz and Summer Reading Program volunteer Lucy Slattery-Vickness. COURTESY: FORL

volunteer knew what to do. Quinn likes punk rock, cooking, and people. He connected with our youngest patrons as well as our middle school volunteers. Asked what skills he learned this summer, he replied that he learned patience, how to be more flexible, and how to work with volunteers. “This job has definitely given me the opportunity to do things I want to do in my life and will help me achieve my goals. I really enjoyed my time here and learned a lot. I wish I didn’t have to leave.” We wish him well as he begins his senior year at Oakland Tech.

Clean Green Mobile
Eco - Friendly Car Wash & Detail Service



www.cleangreenmobile.com
(510) 965-8683

We come to you!!!

GARDEN CLEANERS

\$5 FREE DRYCLEANING with garment orders over \$28
or \$3 OFF orders over \$15
Dry Cleaning only • Present with incoming order

EXPERT SHIRT LAUNDERING!

Garden Cleaners
5808 College Avenue, Oakland
601-1188

Mon - Fri 7 - 7 • Sat 8 - 6
Across from Trader Joe's and Zachary's Pizza

Rockridge Dental™

rockdent.com 510.653.6677

Bruce D. Fong, D.D.S.
Rana Baroudi, D.M.D.

Advanced Preventive, Restorative, Cosmetic Dentistry, and Periodontal Gum Care.

3rd Floor
Market Hall
Ste. 312

GRUBBCO.COM

510.652.2133
3070 Claremont Avenue • Berkeley

510.339.0400
1960 Mountain Boulevard • Oakland

RN Classifieds

Your Message Could Be Here

Your 36-word message is \$22. (Phone number counts as one word). Mail to: **RN Classifieds**, 4123 Broadway, PMB 311, Oakland, CA 94611. November deadline is October 20, 2011. For information: smontauk@gmail.com

Home Repair Expert

Carpentry, remodeling. Doors and windows, glass and locks, small electrical, plumbing jobs, drywall, painting, fences, decks and other odd jobs. Good rates. Rick 510/761-7168.

Fall Special! Penelope's Aesthetics Skin Care Salon

25% Off waxing and facial services. Gift certificates available. Receive excellent, relaxing services with a gentle and personalized treatment. www.penelopecafe.com By appointment. 510/594-1552.

Aesthetic Pruning

I specialize in pruning trees & shrubs under 20 feet tall. I work with trees to enhance their natural beauty. Specialties: maples, camellias, fruit trees, & focal points. Pruning instructor Merritt College. Bruce Thompson 510/428-4964.

Electrical Repairs & Remodels

From doorbell repair to whole-house rewiring, we've been doing electrical work in Oakland and Berkeley for over 30 years. Sutorik & Company, www.sutorikandco.com, lic#397149. 510/655-3677.

Licensed General Contractor

Craftsman rehabs, remodels, kitchens, baths, doors, windows, gates, fences, seismic upgrades, waterproofing. Large or small, interior or exterior. Professional & courteous, many local references, fully insured. See catconstruction.biz Craig 510/232-5978.

HELP Me Update Dentist List

ADD Listing using link at bottom of this page: SFbay.SmarterYellowPages.com/Dentists EDIT Listing & add Links to Reviews Photos Facebook LinkedIn Twitter YouTube in form at Listing bottom. Thx! psmithsr@gmail.com

All Things Maternal

Psychotherapy for Mothers and Others
Compassionate help for women and couples facing the challenges associated with infertility, pregnancy, post-partum, and parenting. On College Ave/Chabot. Deena Solwren, LCSW 510/364-2864.

Rockridge LGBT Realtor7

Both "on the ground" traditional and internet savvy marketing. Excellent detailed service. Buy or sell transactions to "fit your life's schedule" not mine. Lic#01885305. www.Medairy.net Medairy 510/517-9969.

Seasonal Window Cleaning

Homes, Offices and Storefronts. Dependable, Fast, Cheap. Large or Small, Seasonal Does Them All. Bonded and Insured. 510/472-3861 seasonal.windowcleaning@gmail.com

Violin & Music Theory Lessons

Now available in Rockridge Studio. Kit Eakle teaches all levels, ages, and styles. Specializing in young beginners. 35 years experience teaching and performing. Lessons commence late September. Call 510/237-5551 or email kit@musickit.com

Scenic Streets

from page 8

O'Brien, says a plan should be drafted by mid-October.

"Since we do not own the property, we are actively working with our landlord to establish a plan of action" says O'Brien. "But DaVita is committed to beautifying our exterior lot and introducing green space to our location."

The chain link fenced facility has been a concern for many local residents who feel

Life Changes

Have you experienced a change in your life? Would you like to make a change? A therapy group is forming to offer support in your journey. Barbara West RN, MFT. 510/917-1828. www.bwesttherapy.com

Spectacular Service Housekeeping

We provide excellent housecleaning service with greatest attention to detail. Local recommendations. *Let us create free time for you* www.spectacularhousekeeping.com.510/228-5704. Free estimate.

Bayrocket Design

Websites, social integration, web video & graphic design. Designs that sell you, your company & your brand. Visit us at www.bayrocket.com or email info@bayrocket.com

its appearance makes a poor first impression to area visitors.

"It's a pretty stark property" says nearby homeowner Stephanie Bianco. "And it's the first thing everyone sees when they come off the highway. A little landscaping will go a long way to improve such a prominent corner in our neighborhood."

Scenic Streets will post periodic updates on its web site, www.scenicstreets.org, so area residents can follow DaVita's progress. Lund says the community is also encouraged to e mail suggestions or comments of support that he will pass along to DaVita.

Norman H. Burg, DDS
General Dentistry
(510) 652-1517
5700 Broadway, Oakland
A Prevention Oriented Practice

Mimi's Landscaping
Design
Installation
Consultation
Construction
Rockridge Resident
510.595.9090
Quality service



Experience the Unique Difference...

Ortrun Niesar
510.326.2161
ortrun.niesar@sothebysrealty.com
sothebysrealty.com
DRE #01161032

I look forward to serving you!

East Bay | Sotheby's
INTERNATIONAL REALTY





Over 400 homes sold - Experience Counts

Number of Homes Sold: *Over 400*
 Homes Sold in Rockridge: *Over 80*
 Value of Working with Realtors who have over 35 years Experience? *PRICELESS*

Terry Kulka & Julie Bartlett
 510.682.5917 • terrykulka@att.net
 www.terrykulka.com



COMMERCIAL AND RESIDENTIAL
**INTERIOR-EXTERIOR LEAD
 CERTIFIED PAINTERS**
 Professional preparation. Many local references. All work Guaranteed
 (510) 654-3339

Curves
 Rockridge

Located on Market Hall's Lower Level
 Entry on Shafter Avenue

510-655-8808

Open 7 Days www.curvesrockridge.com
 Mon- Fri 6:00 -7:30 Free Parking!
 Sat & Sun 8:00 - Noon Across from BART

COLLINS ROOFING

Family Owned & Operated



482-2227 Seamus

www.collinsroofing.com

Quality Work • Free Estimates

Lic # 695711

ASHBY LUMBER
 HARDWARE & BUILDING SUPPLIES

**Sustainable Living
 Starts at Home**



**Sustainable Building
 Starts at Ashby Lumber**

Looking for a Contractor?

Visit our Contractor Directory
 at ashbylumber.com

824 Ashby Avenue • Berkeley
 Ph: 510.843.4832 Fax: 510.843.3840

**FOR SALE
 IN ROCKRIDGE**

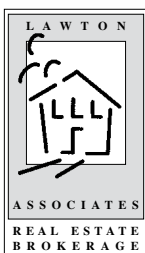
5350 Bryant Street \$649,000
 2 Beds/ 1 Bath in Rockridge
 Sunny & Charming Craftsman Bungalow.
 Remodeled Kitchen that opens to the
 backyard.
Award Winning Chabot Elementary School
www.5350Bryant.com

**COMING SOON
 IN ROCKRIDGE**

Manila Avenue
 2 Beds & 1 Bath
 Craftsman Bungalow on a Quite Street.
 Nice Architectural Detailing

Lawton Avenue
 3 Beds/2 Baths
 Shingled Craftsman Bungalow Above
 College. Hardwood Floors, Formal Living
 & Dining Room.
Award Winning Chabot Elementary School

*Needed- Nice Homes with good
 Rockridge Locations continue to sell
 quickly. We need more homes to
 sell. Well qualified buyers are taking
 advantage of the extremely low interest
 rates available now. Call or email me
 for more information. 510-612-2547 or
ronkriss@jps.net*



**Ron Kriss, Broker
 Lawton Associates**

510-547-5970 Ext. 55
ronkriss@jps.net

"#1 in Rockridge Real Estate"

www.LawtonAssoc.com

aboutface&body
 dayspa oaklandberkeley
 serving you since 1981

AVEDA PRODUCTS

Now offering men's waxing

3190 college avenue
 at alcatraz
 berkeley, ca 94705

p 510.428.2600

www.aboutfaceandbody.net

sun-tues 10:30-5:30
 wed-sat 10:30-8:00

**Flush with
 Confidence**



License #754966

BETTER LIVING
 through Modern Plumbing
(510) 465-3000

www.pipespy.com

KEVIN BROWN
 Broker

654-8707 or 593-4780

PROVIDING

Professional,
 Full Service
 Real Estate Brokerage
 To Rockridge Clients
 For Over 30 Years.

SPECIALIZING IN

- ❖ Residential Sales
- ❖ Income Property
- ❖ Commercial
- ❖ Property Management



**Better Homes
 Realty**
 5353 College Avenue
 Oakland