

THE Rockridge News

www.rockridge.org

VOL. 28 ■ NO. 3 ■ ISSUE NO. 298 ■ March 2, 2013

■ CIRCULATION: 5,800 RESIDENCES; 200 BUSINESSES

Sponsored by the Rockridge Community Planning Council • 4123 Broadway, PMB 311 • Oakland, CA 94611 • 869-4200

The kitchens at right, included in the 2011 Rockridge Kitchen Tour, show that redesign can improve natural light, circulation, and functionality. Planning a remodel? Plan on the 2013 Kitchen Tour for ideas and resources.



The 2013 Rockridge Kitchen Tour: The Search Is On



by Natalie Mehta,
Tour chair

Planning for this fall's Rockridge Kitchen Tour, RCPC's biennial fundraising event, is building steam, and the first

step is to identify fantastic kitchens to feature on the tour. Have you just completed your own kitchen renovation? Have you noticed that the port-a-potty in front of your neighbor's house is finally gone? If so, please let us know.

As is the tradition, this fall's tour features nine beautifully renovated, restored, or remodeled Rockridge residential kitchens, open to the public for an afternoon of viewing and inspiration. If you are contemplating a renovation in the future, this event is not

to be missed. Prior tours have included kitchens demonstrating a range of styles (traditional, modern, and Craftsman), budgets (modest to expensive), and sizes (small to expansive). Each kitchen offers several unique features, as well as insights into kitchen design trends.

If you have or can recommend a kitchen for the Tour, the RCPC invites you to submit it now for the fall 2013 Kitchen Tour: e-mail Natalie Mehta at natalie.mehta@yahoo.com or call 415/279-5148.

21 March 21, 2013 RCPC Town Hall Meeting AGENDA

Rockridge.org 2.0 Goes Live New Website Unveiling at Town Hall

Phase One of RCPC's new website is ready to launch! Come to the March Town Hall meeting for a personal tour of the site's features and give your candid feedback on what will be most useful now and in the future.

This site is for you – We need your input! The new "Rockridge.org" will improve Rockridge residents' ability to share and react to critical local news, a level of interaction not possible with the previous design.

We also are interested in building on these improvements in the months ahead and want to hear your reactions to the changes and thoughts on how the site might evolve over time.

Join RCPC, and your friends and neighbors for this lively unveiling.

Thursday, March 21 | 7:30-9 p.m.
Rockridge Branch Library,
5366 College at Manila

April Election: RCPC Board of Directors

Voting for candidates for RCPC's board of directors will be held at the April town hall meeting Thursday, April 18, following an introduction and full statements from new candidates about their interest in board service. Voting will also be held the following Saturday for those residents unable to attend the town hall session. Following are brief statements from candidates with photos to provide a preliminary sense of the candidacies to the Rockridge community.

Introducing: 2013 RCPC Board Candidates



Virginia Hamilton: I moved to Rockridge six months ago, with a specific interest in becoming involved in the community, both to contribute my own skills and talents, and to become immersed in the "place" of Rockridge and Oakland. I grew up in New York City, and have a keen appreciation for how neighborhoods can work, and the sense of community that is possible.



Lisa McNally: Civic engagement is important to me, and being a part of an historic and dynamic neighborhood planning group such as RCPC allows me to stay informed while actively contributing to my community. I believe that space informs a sense of place, with our environment affecting how we interact with others and shaping our personal development.



Greg Pasquali: I've worked for progressive urban planning and development organizations in Oakland that focus on making cities and neighborhoods more livable and sustainable by building buildings that positively impact their neighborhoods, making public spaces safer and more beautiful, and giving people new transportation options.

Op-Ed

Essays on matters of local interest are invited for consideration as Op-Ed pieces for *The Rockridge News*. Please limit length to 450 words and submit to editor@rockridge.org.

Views expressed in Op-Ed essays do not necessarily reflect those of The Rockridge News, its editor, or the board of directors of the Rockridge Community Planning Council.

An Educational Choice: Emerson Elementary

by Molly Brostrom, Rockridge parent

I spent a chunk of the first week of this school year in tears. Some were the predictable mom tears for the “baby” in our family starting kindergarten, while another child began middle school (with all those imagined big, bad kids). But many of them were tears of concern and frustration.

We chose to enroll our son in kindergarten at Emerson Elementary, our neighborhood school. A school where 65 percent of kids receive free or reduced lunch. A school where test and API scores are climbing, but still low. A school whose visual picture is amazingly different from the Rockridge bubble in which we live.

But it's a school with new leadership and vision, growing parental involvement, and exciting new programs in reading, music, art and poetry. A school, we decided after much deliberation (and tears, of course), that we should support. Schools need a mix of kids to be successful – our son would help build a mix. The “baby” was gung-ho (they have a great playground, what else could he need?). He's a solid kid – easy-going, eager, curious – and with our support, he will be fine wherever he is. But I still worried. Did we make the right decision? What will he miss out on by not being at a school with more resources? Will he lack challenges by not being in a cohort of similarly privileged classmates? Will the family challenges of some of the students overwhelm his teacher?

The tears of concern brought on tears of frustration: Why does getting your child a good, public education have to be such hard work? Why do decisions to benefit our own kids have to be at the expense of other kids in our city? Why aren't the masses of children attending chaotic and underperforming schools more of a concern to our country? I can imagine this frustration is shared by many parents in Oakland, particularly families with fewer or no options for better schooling.

While a tad more relaxed than the typical “Tiger Mom,” I'm fierce in my love and hopes for my children. I want my children to learn, to be challenged, to have the opportunity to develop passions. But I also want my children to be compassionate and empathetic, and to know and value what it means to live in a

truly diverse community. School is an integral piece of any child's community, and such a great opportunity to experience diversity.

I'm happy to report that the tears of worry quickly stopped after the first week: we are confident and pleased with our decision to enroll our son at Emerson. Our son has never questioned the decision. From day one, he has been excited to go to school and begs us to let him stay and play with his classmates at the end of the day. And it's not just the playground he loves; he told an adult friend recently that his favorite part about school is the reading, writing, and drawing that he does in class. Emerson is pioneering “Balanced Literacy,” an exciting new reading program that is immersing the kids in books, stories and characters, some together as a class, and some at each child's level. He belts out new songs taught by the music teacher, and shares stories about interactions with teachers and peers.

We know that attending Emerson will require a sustained time and resource commitment by us as parents. Current enrichment programs, such as art and music, are not a part of public school funding and have been launched at Emerson with hard-fought dollars raised by a small but energetic PTO. To continue to offer these programs, as well as other support needed to ensure all Emerson students achieve, will require parental and community investment. But it is a commitment we are willing to make. Emerson is giving our son a love of school and learning, and feeding his curiosity – invaluable and foundational tools. And Emerson gives him a beautifully diverse cohort of friends – a community he would not see in a more resourced school or in our daily lives.

We are grateful and happy to be attending Emerson Elementary, our neighborhood school.

Editor's note: Molly Brostrom lives in Rockridge with her husband and three children. Their son is in kindergarten at Emerson; their two daughters, grades 6 and 8, attend Claremont Middle School. Tours of Emerson Elementary take place regularly. Call Emerson Elementary at 654-7373 to schedule. More information at <http://www.ousd.k12.ca.us/Page/2038>. This story was first printed in the Temescal News & Views, January-February 2013 issue.

ROCKRIDGE BRANCH LIBRARY

5366 College Avenue

597-5017

HOURS:

Tues: 12:30 – 8

Weds, Thurs, Sat: 10 a.m. – 5:30 p.m.

Friday: 12 – 5:30 p.m.

Sunday: CLOSED

Library program details: See Calendar, page 15.

THE Rockridge News

The *Rockridge News*, founded in 1986 by Don Kinkead, is published monthly in Oakland and is sponsored by the Rockridge Community Planning Council (RCPC), a nonprofit public benefit organization founded to: preserve and enhance the unique character of the Rockridge neighborhood; promote the health, safety and quality of life of its residents; furnish a forum for community involvement, and provide leadership and representation of neighborhood interests.

Rockridge News Production

Don Kinkead.....Editor
Ortrun Niesar.....The Muse
Barry Kaufman.....Food
Jo Ellis.....Advertising & Community Calendar
Theresa Nelson.....Neighborhood Merchant
Susan Montauk.....Business Manager
Don Kinkead.....Graphics & Layout

RCPC Board of Directors, 2012-2013

Andrew Charman.....Chair
Christopher Chin.....Vice-Chair
Laura Schlichtmann.....Secretary
Bernard Baltaxe.....Treasurer
Stuart Flashman.....Chair Emeritus
Virginia Hamilton, Greg Pasquali, Michael Kan, William Kaufner, Don Kinkead, Lisa McNally, Ronnie Spitzer, Zabrael Valentine, Ann Winterman

Contact the board: chair@rockridge.org
For information: info@rockridge.org

NEWSLETTER SUBSCRIPTIONS

To subscribe to *The Rockridge News*, send your check for \$20, payable to *Rockridge News* Subscriptions, to: *Rockridge News* Subscriptions at the address below.

CONTACTING THE ROCKRIDGE NEWS

- Are there community issues you'd like to see covered in *The Rockridge News*?
- Do you have questions about newsletter distribution?
- Want to volunteer to be a *Rockridge News* block captain?
- Would you like to write a letter to the Editor?

Contact us at one of the following:

Editor: editor@rockridge.org

www.rockridge.org

The Rockridge News, 4123 Broadway, PMB 311, Oakland, CA 94611

RCPC Voice-mail: 510/869-4200

Articles submitted for publication may be e-mailed to the above address. Submissions are limited to 600 words; must include the author's name, phone number, e-mail address, and city or neighborhood of residence; and are subject to editing. To reprint a *Rockridge News* article, please contact the editor.

NEWSLETTER ADVERTISING/DEADLINES

Publication date of the next issue is:

☛ April 6, 2013

☛ April deadline is March 21, 2013

Advertising rates are \$26/column inch. Six-month pre-pay rate available. For display ads, call Jo Ellis at 653-3210 (after noon), or e-mail joellis1@hotmail.com. RCPC reserves the right to refuse any display or classified ad that it deems inappropriate. (Classified ad contact, page 14.)

RCPC Land Use Committee

The RCPC Land Use Committee meets the fourth Wednesday of the month at the Rockridge Branch Library, Upstairs Meeting Room, 7:30 p.m. Next meeting: Wednesday, March 27. Topics may include an update on the Rockridge Shopping Center Project. (Subject to change. Check www.rockridge.org for updates.)

■ **Land Use Meeting Agendas:** Contact Stuart Flashman (652-5373 or e-mail stuflash@aol.com) for a copy of the current Land Use Committee meeting agenda.

Land Use Update

by *Stuart Flashman, RCPC Land Use Committee chair*

■ Rockridge Shopping Center Rebuild and Expansion Project, Broadway & Pleasant Valley Avenue

This project proposes to replace the current Rockridge Shopping Center with an expanded center, including a larger (65,000 sq.ft.) Safeway store, more commercial retail space, and some professional offices, but no residential. Total usable space will increase by about 120,000 sq.ft. Although the March Rockridge News will have gone to press before the February Land Use Committee meeting, a lot has been happening with this project this month.

As reported in February's Rockridge News, the Draft Environmental Impact Report (DEIR) was issued at the end of December, and comments were accepted through February 25. The Planning Commission held a public hearing on February 20 to receive oral comments. In addition, half of the February RCPC Town Hall meeting was devoted to discussing issues raised by the DEIR.

Perhaps the most striking thing about the DEIR was the number of newly-proposed street configuration changes for the area surrounding the project. The two existing

uncontrolled slip lanes for right turns (from southbound Broadway onto 51st Street and from northbound Broadway onto Pleasant Valley Avenue) are proposed for removal, with the aim of improving bicycle and pedestrian safety. Also, the College Avenue and Broadway intersection would be redesigned to make it perpendicular. The redesign would allow cars (but not large trucks) to turn left from College onto Broadway. It would also slow traffic turning right onto Broadway from College, improving pedestrian and bicycle safety at the intersection.

Major Changes for Intersections

The major project impacts, both short term and long term, are on traffic. The Broadway/Pleasant Valley Avenue/51st Street intersection would see its already poor level of service worsen significantly. In the long term, delays at the Piedmont Avenue/Pleasant Valley Avenue intersection would also worsen significantly, and traffic from Howe Street would have more difficulty entering Pleasant Valley Avenue, especially for left turns. While other intersections (including intersections on 51st Street all the way to Shattuck Avenue) would be potentially impacted, those impacts could be mitigated by addition of turn lanes or updating and coordinating traffic signals.

While the DEIR dismissed the significance of cut-through traffic on nearby

residential streets, RCPC's analysis indicates some potential for impacts, including on Coronado Avenue and John Street. RCPC is asking that the EIR take another look at the significance of project-related cut-through traffic and how to mitigate it.

Despite the large increase in traffic and associated generation of carbon dioxide from vehicle exhaust, the DEIR concludes the project will actually decrease generation of greenhouse gases. The reason is that the current Safeway leaks large amounts of refrigerant gases from its aging refrigeration systems. The new Safeway would reduce this leakage by a factor of 10. This points up the desirability of the city adding to its Energy and Climate Action Plan a requirement that major users of refrigeration systems (e.g., supermarkets, cold storage warehouses) periodically upgrade their systems. (The state's Air Resources Board has instituted a best management practices system for managing refrigerant leakage, but that system won't apply to a store the size of the current Safeway until 2014, and doesn't require replacement of leaky systems, only repair within two weeks of leak detection.)

RCPC continues to believe that the project would benefit from including an internal AC Transit bus station, as well as shuttle bus service to Rockridge and MacArthur BART stations. In addition,

➔ **Land Use Committee, page 15**

piedmont dental | BY DESIGN
Dale Herrero, DDS & Jill Martenson, DDS

IMPLANT, AESTHETIC & FAMILY DENTISTRY

"Hi! Jenner and Erin here with mommy and daddy reminding you to take good care of your teeth!"

New Patient Special : \$149
CALL TODAY!

INCLUDES A COMPLETE COMPREHENSIVE EXAM, FULL MOUTH DIGITAL RADIOGRAPHS & A SMILE EVALUATION.

Dr. Jill Martenson : Rockridge neighbor since 1999

1331 GRAND AVENUE, PIEDMONT, CA 94610 | T 510 652 2911
piedmontdentalbydesign.com

a \$300 value!

local sustainable residential architecture

BUTTRICK WONG Architects

Jerome Buttrick, AIA | Tim Wong, AIA
www.buttrickwong.com | 510.594.8700

Claremont Middle School Sets 4th Annual Pancake Breakfast Fundraiser

Saturday, April 6

Join your friends and neighbors Saturday, April 6 at the Rockridge Masonic Hall, 5449 College Avenue, for the 4th Annual Pancake Breakfast to benefit Claremont Middle School. Breakfast, including pancakes, eggs, sausage, bacon, fruit, coffee and tea, is generously donated and prepared by the Masons, so that all proceeds benefit the music, fine arts, and computer programs at Claremont Middle School.

In addition to the communal table breakfast, student art will be on display and Claremont Middle School musicians will perform under the direction of music teacher Renae Briggs. Four seatings are offered at 8 a.m., 9 a.m., 10 a.m. and 11 a.m.

Tickets for the event are \$10 per person.



Children under 5 years eat for free and need no ticket. This event has sold out in the past, so get your tickets early. Here's how:

■ **ONLINE:** Go to the Claremont Middle School website at www.claremontms.org. Find the Pancake Breakfast link towards the upper left side of the page. (A small transaction fee is added for online purchases.)

■ **BY MAIL:** Make your check out to "Claremont Middle School PTA" and note "Pancake Breakfast," number of guests, and preferred seating (8 a.m., 9 a.m., 10 a.m. or 11 a.m.). Place your check in an envelope addressed to Claremont Middle School PTA. Mail it to or drop it off at Claremont Middle School, 5750 College Avenue, Oakland, CA 94618. Your name will be placed on the guest list.

■ **OR:** Contact Paul Kagiwada (Kag) at 510/301-3905 or by e-mail to paulgkag@yahoo.com to purchase tickets directly.



Claremont Centennial Celebrates Long Success

"This School Has Been Here Since 1913"

by Jennifer Vetter, Claremont Parent

Claremont Middle School is now in its 100th year, something to celebrate! All are invited to come to the party: alumni, members of the community (past, present, and future), Knight athletes, members of the Claremont Band and Orchestra, teachers, staff, and of course the current Claremont students, who are thriving under the leadership of co-principals Ronald and Reginald Richardson.

There will be an afternoon gathering from 3 to 5 p.m. in the beautiful school garden next to Birch Court on Saturday, June 1, 2013 at Claremont Middle School. Attendees can reunite with old classmates, listen to a guest speaker or two, and enjoy birthday cake and refreshments. Families are encouraged to bring a basketball or a kickball so we can play some games together on the blacktop. What was P.E. class at Claremont like in the 1950s? Or the 1970s? Is it true that the Rockridge branch of the Oakland Public Library was once housed

in a portable on the Claremont campus? We want to hear your stories!

How can Rockridge News readers help? Please spread the word to family, friends, neighbors, and especially Claremont alumni who have moved out of Rockridge. Donate to the Claremont Fund in support of our cherished neighborhood school. Go to the school website www.claremontms.org to make a donation and/or find out more about the plans as they develop. Anyone interested in helping with the outreach and planning for the celebration should contact Claremont 8th grade parent Michelle Bilensky at mdb.pta.oakland@gmail.com

But Wait... There's More

Organizing a Capital Campaign Fund Drive for the repair and restoration of the school's historic iron gate, which now stands at the corner of College Avenue and Birch Court.

Go to the school website at www.claremontms.org to make a donation or contact Claremont 8th-grade parent Michelle Bilensky at mdb.pta.oakland@gmail.com for more information.

Neighbors West of Claremont Avenue Unite to Fight Crime

by Diana Thomas, Rockridge resident

The brutal mugging of a 60-year-old Rockridge woman on New Year's Day has galvanized residents west of Claremont Avenue to take steps to deter area crime.

In a violent attack in a section of Rockridge that continues to see a disproportionate share of area crime, the victim was assaulted and robbed on Claremont Avenue near its intersection with Chabot Road.

Although the blocks between Claremont and Telegraph house approximately 30 percent of the population within OPD's Beat 12Y, they accounted for 67 percent of the assaults and robberies reported during the early part of this year and 50 percent of all residential burglaries. An analysis of OPD data shows that the area experienced more than its fair share of serious crime throughout 2012 as well. Its streets can be poorly lit at night and also provide criminals quick getaway via nearby highway ramps.

Frustrated and frightened residents have revitalized Neighborhood Watch groups and are using websites such as nextdoor.com to alert each other of potential crime activity and available safeguards.

In February, volunteers distributed 500

◆ **Neighborhood Responds to Crime, page 13**

Tickets Are Going Fast

This Is It! Oakland Tech High School Auction

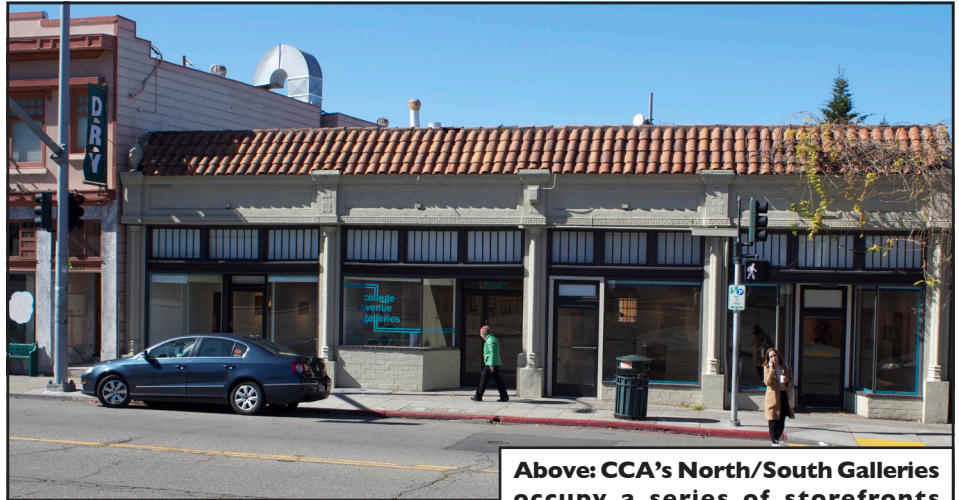
Wonderful food and entertainment and the chance to bid on an enticing array of auction items await you at "This is It!" Oakland Technical High School's 2013 Auction, the school's main fundraising event. Tech is Oakland's highest scoring comprehensive high school

Sponsored by the school's Parent Teacher Student Association (PTSA), the auction raises crucial funds that provide support to all areas of the school and its students; from classroom materials to infrastructure needs; from athletics to music; from lab supplies to technology, and more.

The Rockridge community is invited to the party and fundraising auction. The date for this exciting event: Saturday, March 16, 6-10:30 p.m., at the Uptown Body and Fender building, 401-26th Street, between Broadway and Telegraph Avenue.

Tickets are \$35 per person. For more information, to purchase tickets, or to donate an item, contact auctiondonation@oaklandtech.com or visit: www.oaklandtech.com/ptsa/auction-2013/.

CCA Galleries Showcase Student Art



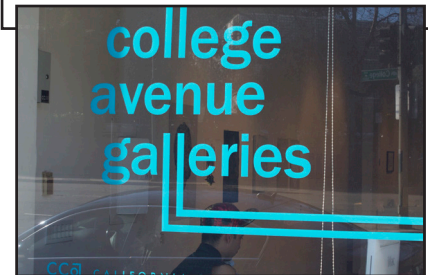
Above: CCA's North/South Galleries occupy a series of storefronts at 5241 College Avenue, close to Broadway. The galleries host rotating exhibitions of student art that are open to the public Tuesday through Saturday. Lower left: Interior of a gallery in the midst of an exhibit installation.

College's Galleries on College

by Don Kinkead

For all the neighborhoods College Avenue traverses between Bancroft Avenue in Berkeley and Broadway in Oakland, and for all the opportunities shoppers and residents have to learn the ins and outs of the avenue, there are always new nooks and crannies to discover and explore. Some are obscure in their own right, others may find quietude in the backwash of their better-known parent.

Across Broadway from its angled intersection with College Avenue sits CCA, the California College of the Arts, a school dedicated to fine arts and design since its founding in Berkeley in 1907. Following



PHOTOS/D. KINKEAD

several location and name changes in earlier years, the school has called its present site home since 1922. There is a San Francisco campus, as well.

Over the years, the school has grown, sprouting a few new buildings outside of its original boundary and occupying other nearby, existing structures for its classes and associated uses.

A glance at the map on one of the Oakland campus's website pages (<http://www.cca.edu/sites/default/files/pdf/08/CCA-oakland-map-detailed.pdf>) shows housing and studio space on Broadway Terrace and classrooms in buildings facing Broadway that stretch across their lots to front on College Avenue as well. Also on College are dedicated art gallery spaces, the North/South Galleries, and gallery offices.

Although it is a low-profile expansion, the school's use of these existing buildings as galleries offers further opportunity to Rockridge residents to get to know a bit

College Art on College Avenue, page 8

LAW OFFICES OF
KYLE M. JOHNSTON

 5315 COLLEGE AVE.
 OAKLAND, CALIF.
510.527.1880
 CALL FOR YOUR FREE
 INITIAL CONSULTATION
 PROBATE LAW ♦ WILLS & TRUSTS ♦ FAMILY LAW
WWW.KYLEMJOHNSTON.COM


Mariposa
 Gardening & Design
Design, Installation and Maintenance
 Native Plant Gardens & Stonework

 Andrea Hurd, Horticulturist and Stonemason
 License #883905 * tel. 510.558.8429
www.mariposagardening.com





Rock ridge Cornucopia

Barry A. Kaufman

SAUSAGES

In my wanderings through Ver Brugge on College Avenue, and The Pasta Shop and Marin Sun Farms Butcher Shop at Market Hall, I'm amazed at the variety of sausages offered to home cooks. Gone are the days limited to the humble hot dog or Louisiana hot links. It appears the gourmet sausage is here for all to enjoy.

To add to the mix, two new sausage restaurants have come to Oakland. Soon to be open, Hog's Apothecary at 375-40th Street in the Temescal District is described as an American style "beer hall" serving standard offerings of bratwurst and Polish sausages as well as more creative fare such as a chicken-pancetta sausage with chanterelle mushrooms and figs and an in-house smoked andouille sausage. House-made mustard and sauerkraut will be available. Rosamunde Sausage Grill in downtown Oakland's Swan's Market (911 Washington) has an awesome menu of some 15 sausages plus a changing list of specials on the menu – even vegan. Rosamunde is a "hipster" hit in San Francisco's Mission neighborhood.

What Exactly is a Sausage?

Often associated with German beer gardens, sausages are found in most world cuisines. In its simplest form, sausage is a method of preserving and creating more palatable forms of less desirable cuts of beef and pork. Sausages differ depending on their ingredients, spices, curing techniques, and whether fresh or cooked.

Traditionally, most sausages are made with beef or pork, but you can find links made from veal, chicken, turkey, lamb and fish. (Check out Ver Brugge's salmon sausages.) All contain varying amounts of fat. Seasonings run the gamut from garlic to hot cayenne and exotic North African peppers. Some veal-based sausages such as bockwurst are very mild.

Store-bought sausages can be fresh, cured with salt or smoke, or heat processed. Some sausages, such as Chinese lop chung, are dried and, as a result, have a long shelf-

life. Heat processed or pre-cooked sausages are mainly found in supermarkets and can be served hot or cold. All these factors produce an almost endless quantity of sausage that can be used in a variety of ways and that will appeal to different tastes.

The Sausage in America

The history of sausages in the U.S. is a history of immigrants who introduced them. Most of us are familiar with the basic European sausages: German bratwurst and bockwurst, Italian sweet and hot salsiccia, Polish kielbasa or Portuguese linguica. Less familiar is the British banger served with mashed potatoes and peas. All British pubs serve bangers 'n mash. Blood sausages are common in Irish and Spanish cooking. New Orleans' regional favorite, andouille, found in gumbos and jambalaya, is readily available at most butchers. Mexican and Spanish chorizo differ greatly from each other. Spanish chorizo is a dry and not very spicy sausage ready to cook or eat cold as part of a tapas assortment; Mexican chorizo is an uncooked spicy pork sausage usually removed from the casing and often cooked with eggs. Chinese lop chung is a dry sausage made from pork and lots of fat. It is smoked, slightly sweet, and highly seasoned. Thinly sliced lop chung is a welcome addition to any stir-fry dish and can be found at any Asian market.

Except for the lop chung, all of the sausages mentioned can be found at Ver Brugge, The Pasta Shop, or Marin Sun

Farms.

My current go-to favorite sausage is the Moroccan merguez. Merguez are uncooked lamb sausages made with traditional North African spices.

Merguez Sausages with Caramelized Red Onions

Ingredients

3 tablespoons extra-virgin olive oil
2 medium red onions, sliced 1/4 inch thick

Salt

1 tablespoon honey
1 tablespoon balsamic vinegar
Freshly ground pepper
Four merguez sausages
Four 6-inch pieces of baguette, split and toasted

Directions

- Heat the olive oil in a large skillet.
- Add the onions, season with salt and cook over moderately high heat, stirring, for 5 minutes.
- Reduce the heat to moderate and cook, stirring occasionally, until the onions are softened, about 10 minutes.
- Stir in the honey and balsamic vinegar and cook over low heat, stirring occasionally, until richly caramelized, about 10 minutes.
- Season to taste with salt and pepper.
- On a grill (or a cast-iron grill pan), grill the sausages over moderate heat, turning occasionally, until nicely charred and cooked through, about 15 minutes.
- Set a sausage in each piece of baguette and top with the caramelized onions. Close the sandwiches and serve.

Barry Kaufman is a graduate of the California Culinary Academy. Barry is available for cooking classes and tours of East Bay ethnic markets. Barry's e-mail is kaufman42@comcast.net.

The New Rockridge.org
See it Thursday, March 21.
RCPC Town Hall: Details, page 1.

Experience the Unique Difference...



Ortrun Niesar

510.326.2161

ortrun.niesar@sothebysrealty.com

sothebysrealty.com

DRE #01161032

I look forward to serving you!

East Bay

Sotheby's
INTERNATIONAL REALTY

Broadway/Keith to Broadway/Golden Gate Way Redesign Unveiled at Town Hall Meeting

Preliminary plans to reconfigure Broadway between Keith Avenue and Golden Gate Way to improve safety were presented at the February RCPC Town Hall meeting by city of Oakland staff and their consultants.

Improvements to this section of roadway – funded through the city’s settlement agreement over the fourth bore of the Caldecott Tunnel – were designed primarily to improve safety for pedestrians and cyclists in the corridor by creating separate spaces for these roadway users and by slowing down adjacent motor vehicle traffic.

Between Keith Avenue and Brookside Drive, the design calls for wider, continuous sidewalks and safer intersection crossings; a two-way bicycle pathway separated from motor vehicle traffic; and more conventional urban roadway configurations than the current high-speed design. The bike path will transition to more traditional one-way bike facilities between Brookside – at a new four-way stop – and Golden Gate Way.

Please visit <http://tinyurl.com/proj-9-14-pub-mtg> for the meeting presentation, including slides of the proposed project. Contact the city’s Caldecott projects outreach coordinator, Victoria Eisen, at victoria@eisenletunic.com or 510/525-0220 with any questions or comments. **The comment deadline is 5 p.m., Friday, March 15, 2013.**

Rockridge Potholes: An Informal Survey

By the time her car had dropped bone jarringly into yet another pothole on a Rockridge street, Susan Shawl began to wonder just how bad the potholes were around her neighborhood. She had driven only a few blocks and was already concerned about the car’s suspension.

After returning home for paper, pencil and tape measure, she cruised nearby streets to record potholes and deteriorated paving. Her plan was to submit the list to the Public Works department for repairs.

In less than half-an-hour, she developed the following list of 28 potholes:

Claremont Avenue

Heading east from Clifton towards Hudson. Note: much of the traffic on this section is exiting Highway 24 and turning up Claremont Avenue. Many of the vehicles are trucks.

Address	Size of holes
5418	3' x 2'; 1' x 2'; 1' x 6"
5424	1' x 9"; 2 small ones; 1' x 2' x 3" deep; 3' x 4' x 3" deep; plus several along the white line between 4' to 6' long.

Claremont under the freeway at the FROG playground, 4' x 2'

Claremont under the freeway at the Dog Park, 4' x 2' x "shallow"; 4' x 2' x deeper; 1' x 1'; 4' x 1'; 3' x 2'; 6' x 1'; 8' x 3' x 3" deep; 1' x 2'.

Forest Street

Heading west from College Avenue

316 | 3' x 2'

Forest, between Shafter & Locksley (no house number): 4' x 5' and 3' x 3'

497 | 2' x 2' x 9" deep and 2' x 6"

501 | 3' x 3'

63rd Street, heading east from Hillegass towards College Avenue

348	2'-6" x 1'-6"
344	1' x 1' and 1' x 2'
312	A small area is "sinking"
307	1' x 2' and a second one, also 1' x 2'



A driver escapes from the Claremont Avenue pothole near FROG Park measuring 3' wide x 4' long x 3" deep. /D. KINKEAD

Susan then visited the Public Works website at <http://www2.oaklandnet.com/Government/o/PWA/Connect/ReportaProblem/index.htm> to report her findings. Learning that only one problem site at a time could be reported and that each report asked seven questions, she compromised and sent in an e-mail list of her findings.

According to the website, another location to report public works issues is SeeClickFix, a Smartphone app that accepts non-emergency reports to Public Works on a variety of issues from graffiti to potholes

► **Pothole Report, page 13**

"It was best not to distract Cousin Norbert."

cinema poetry from home videos
EricPomert.com
510-409-5515

Life Story Video Editing

DANIEL'S ROCKRIDGE LISTINGS!

15 Offers!

367 60th Street

13 Offers!

358 Cavour

Just Listed!

391 Alcatraz

Coming Soon!

5486 Kales

sterealtygroup.com

Daniel Stea
Broker/Owner/
Attorney
510.867.4094

*Rockridge
and beyond
since 1997*

2987 College Avenue, Berkeley, CA 94705 ♦ DRE #01452156

College Art on College Avenue

from page 5

more about their own backyard.

The North/South Gallery, a series of repurposed store fronts at 5241 College, for example, offers showings curated and installed by student artists developing their craft and meeting with gallery visitors. The Oakland gallery programs rotate weekly and include a reception held Wednesdays, 5:30-7:30 p.m. Gallery hours are Tuesday through Saturday, 11 a.m.-6 p.m., and Wednesdays, 6 p.m.-7:30 p.m. On Sunday and Monday, the galleries are closed to visitors while exhibitions are changed. During the changes, white blinds block the windows, giving the mistaken appearance of a lack of activity in this beehive of art shows.

Another student art display area, more of a street-front gallery viewable from the sidewalk, can be found at 5288 College Avenue.

The next time you are out and about in the College/Broadway area, you might take in a few of the gallery exhibits. A well-timed visit could finish with a meal and cocktail just down the block at one of the many restaurants there, followed by a little self-directed shopping therapy.

A cross-cultural congregation
striving to partner with
the Rockridge community
in lifestyle and service.

College Avenue Presbyterian Church

5951 College Avenue, Oakland 510 658-3665
SUNDAY WORSHIP 10:30 AM • VISIT: CAPCCHURCH.ORG
OUR WONDERFUL COMMUNITY MEAL, FRIDAYS, 6-7PM
A GREAT OPPORTUNITY TO SERVE

Wonderful, ongoing,
weekday classes for
babies or toddlers

KINDERGYM
A Movement Program for ALL Families

Drop-ins or sign ups
for ALL families: songs,
slides, tunnels, parachute play,
bubbles, a fab ball pit, rocking
horses & more!

For 9 months up to 3 years with an adult
Dawn Margolin | 510.547.7726

Temple Beth Abraham
327 MacArthur Blvd., Oakland
(near the Grand Lake Theatre)

www.tbaoakland.org/kindergym

We Say Good-bye and Thank You to Rockridge News Marshal Nancy Dutcher

Nancy Dutcher has been a Rockridge News Marshal since the newsletter's beginning in 1986. Long-time readers will also recall that Nancy was the prime mover behind the assessment district that helped fund the construction of the Rockridge Branch Library. (See below.)

Now, Nancy is stepping down as Marshal and we are asking that one of those loyal

readers, or a recent loyal reader, step up to relieve Nancy.

As one of our eight Marshals, you will pick up your boxes at our assembly venue on 62nd Street the first Friday or Saturday of each month and deliver newsletter bundles to seven homes in the Chabot Road area.

Contact Susan at smontauk@gmail.com or phone 510/547-3855 to offer your help.

There is not enough space in the brief notice above to describe fully Nancy Dutcher's role in the construction of the Rockridge Branch Library.

Forming the assessment district to raise the money to obtain the land and to pay for library construction was a mere early step in the successful 9-year odyssey of organizing volunteers, meeting with politicians and legislators and wrangling architects and builders.

Nancy was not alone in this, of course. Former Rockridge resident Trish West, current resident Annette Floystrup and a host of other volunteers and supporters were at her side much of the time, and RCPC gave its full backing. However, without Nancy's presence throughout as, essentially, the project manager for the whole period of the library project, Rockridge might not have had the community resource it enjoys today. — Ed.


OMNI
PAINTING & WATERPROOFING Inc.
COMMERCIAL AND RESIDENTIAL
INTERIOR-EXTERIOR LEAD
CERTIFIED PAINTERS
Professional preparation. Many local
references. All work Guaranteed
(510) 654-3339

ROCKRIDGE FAMILY DENTISTRY
sherin m. yuan
cosmetic, restorative and implant dentistry
D.D.S.
p: 510 653 4306
5277 college ave #103
oakland, ca 94618
www.rockridgedentist.com

Specializing in Rockridge Real Estate
with the most real estate transactions in Rockridge from 2011 thru 2012

This is an **ideal** time to put your home on the market. Home inventory levels are incredibly low, and buyer demand is very high. This makes it a great time to sell. Many homes have had multiple offers well above 2011 price levels. With prices and interest rates on the rise, it's also an imperative time to buy before missing the window of opportunity. Call for a free home evaluation!

AVAILABLE FOR LEASE:

- 3BD 2BA apt @ \$2,975/mo & 1BD 1BA apt @ \$1,895/mo. 5268 Locksley

PENDING:

- 2BD+, 2BA @ 5335 Lawton, Chabot Dist. w/ FP, large bonus room, yard, garage. Listed @ \$849,000. Pre-emptive offers received.


COMING VERY SOON:


- 3BD++/2BA on main level plus 1BD+/1BA legal in-law unit on lower level..or combine for a grand 4000sf 4BD 3BA stately home, in Chabot District.

NEEDED

- Any and all properties. There is a shortage of supply in all size homes and investment properties

Happy Spring!
Call for a real local expert opinion.
Perry Riani, Senior Real Estate Specialist
Lawton Associates DRE# 01402540
510.813.3799
priani@earthlink.net


LAWTON ASSOCIATES REAL ESTATE BROKERAGE



Eyes on Rockridge

Nurturing Peralta Area's Kids, History, Gardens

by Judith Doner Berne

It's meaningful that as Dodie Lindsay walks her 8-year-old grandson Maceo back and forth to Peralta Elementary, she is repeating history.

It wasn't that long ago that she did the same with her three, now-grown, children, Nina, Jacob and Peter, Maceo's dad.

"It's an eight-minute walk from my front door to the school," Lindsay says. "Coming and going, I walk with neighborhood parents and several grandparents. We exchange news and on the way home arrange impromptu play dates.

"If someone is sick, there are multiple offers to walk a child home. On every walk, I feel blessed to live in a neighborhood where so many work so hard to support the local school."

A Rockridge resident for 37 years, Dodie (short for Dorothy) and her husband Joe Lindsay, now a negotiator for the California Nursing Association, married and moved into the brown shingle Craftsman cottage they have lovingly updated, when they were a few years out of college.

"It was advertised as a "Berkeley brown-shingle in Oakland," she says. And, their 61st Street address, while closer to College than Telegraph, was considered more North

Oakland than Rockridge at the time.

They were also more apt to head to Telegraph than to College for coffee and the newspapers. It wasn't until later that Cole Coffee, formerly Royal Coffee, became a favorite place – not the least because her daughter met her now-husband there in the early 90s.

"It was a neighborhood in transition," Dodie says. "And it has had multiple transitions since."

When the Lindsays moved in, it was mostly working class families, black and white, who came there after World War II. "They, like my husband and me now, had grown children and grandchildren," she says. "I try to honor them by retelling their stories to whoever will listen.

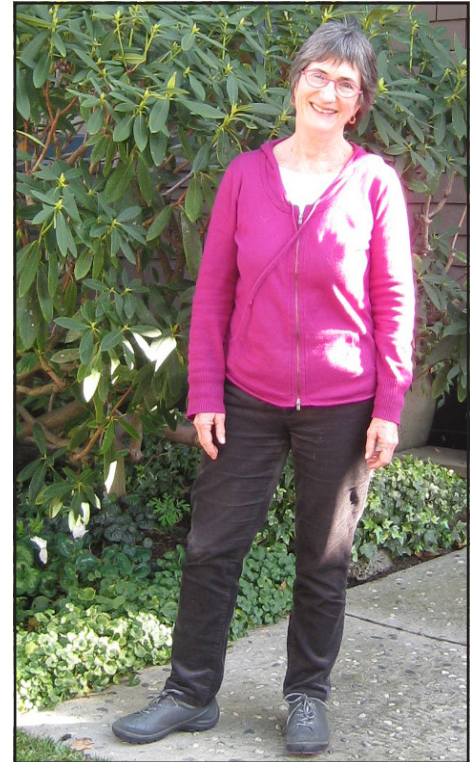
"There aren't a lot of the old-timers left in the neighborhood. It's so important to keep it multi-generational."

Now, she says, it's primarily professionals – doctors, lawyers, architects, software executives. But both then and now, "parents here have always focused on kids and been politically active," Dodie says.

This certainly is why she and Joe must have fit right in from the beginning.

They were active in leftist politics and joined forces with other Oakland progressives but were able to "put partisan politics aside."

That included making the Oakland City Council more representative of the population



Dodie Lindsay says her Peralta neighborhood, though ever-changing, still is filled with people who understand what can be accomplished by community effort. /JUDITH BERNE

and improving their neighborhood schools.

Dodie has a degree in anthropology from Cal Berkeley and, while her children were young, earned a master's in English from San Francisco State.

After a short stint teaching at-risk students at Oakland Tech, she returned to SFS to teach composition to multi-lingual students, recently retiring after 23 years. "I just loved

Building Community, page 12

GARDEN CLEANERS \$5 FREE DRYCLEANING with garment orders over \$28
or \$3 OFF orders over \$15
Dry Cleaning only • Present with incoming order

EXPERT SHIRT LAUNDERING!

Garden Cleaners
5808 College Avenue, Oakland
601-1188
Mon – Fri 7 – 7 • Sat 8 – 6
Across from Trader Joe's and Zachary's Pizza

Rockridge Dental™ 3rd Floor Market Hall Ste. 312
510.653.6677 rockdent.com

Bruce D. Fong, D.D.S.
Filippo Cangini, D.D.S, M.S.

Advanced Preventive, Restorative, Periodontal Gum Care, and Dental Implants.

AMATO ARCHITECTURE

Rebecca Ivans Amato, AIA 510.420.0210
AmatoArchitecture.com

THE ROCKRIDGE MUSE

by Ortrun Niesar

Patricia Bracewell, Author

Last month, Patricia Bracewell's first historical novel, "Shadow on the Crown," the story of 11th-Century Emma of Normandy, was launched with great fanfare and a reading at Diesel Books. Reviews have been mostly in the 4-5 star category and Patricia is "over the moon" happy.

A Writer's Journey

Patricia spent her early years in Southern California, graduating from UC Santa Barbara after majoring in English literature. She eventually moved to San Mateo and took a job teaching English at Mercy High for Girls in Burlingame. She and husband Lloyd settled in Rockridge in 1984 where they raised their two sons, Andrew and Alan. Being a mom came first, but Patricia also worked at Herrick Hospital and took UC Extension classes in short-story writing. Along the way, she had two magazine articles published, one based on her hospital experiences. Then, a hiatus, as Patricia raised her kids. She never stopped writing, though. Constantly improving her skill, she took workshops when she could with such wonderful local instructors as essayist Elizabeth Fischel and others. Two other little pieces were published along the way, but a couple of little essays do not a professional writer make.

From Romance to History

In 1999, Patricia found herself dreaming of writing fiction, romance novels, to be specific, the kind found at the Safeway checkout counter. She joined Romance Writers of America, writing "The Long Road Home," set in Canada at the Lloyds family ranch, as a first effort. An admirable effort, but when the rejection letter arrived, it included such comments as "plodding," and "not dark enough," "sorry," but also, "good



Patricia Bracewell discusses her book "Shadow on the Crown" in a February program at Diesel Books. /D. KINKEAD

writing." Patricia tried her hand again. The plot this time involved a house swap romance between here and Cambridge. All that mushy stuff again and no takers. Not gritty, definitely not dark enough.

It was time to change direction. Patricia had always had a keen interest in English history, and the Cambridge caper presented the opportunity to visit the Cambridge libraries. In 2001, she ran across an astounding heroine, mostly untouched by other authors: Emma of Normandy. This amazing 11th century woman who became a queen had the right mix of dark and dangerous allure for today's audiences who have had more exposure to PBS and historical novels.

Patricia took a year to immerse herself

in Anglo-Saxon history and to travel to England, Normandy and Denmark. She refined her writing style, aiming for a blend of non-fiction and fiction writing suitable for an historical novel.

The first draft of the budding novel emerged in 2007, followed by rewrites in 2008 and 2009. Imagine our author penning away in her Rockridge garret for three years – words dropping like rose petals.

Understanding Her Herione

I was curious to hear how much our writer identified with her heroine Emma. Patricia admitted that her own life experiences as a woman did help to shape and deepen her understanding of her character. All to the good, she thinks: Emma is a real flesh-and-blood woman, accessible to today's readers. Patricia's early penchant for romance novels played a role, but she seems to have achieved the right balance for an historical novel featuring a real person.

It must have seemed right to the publishers as well; they will publish two more volumes to make this a trilogy of medieval mayhem.

The rose petals are already falling again in Rockridge.

Congratulations, Patricia! We look forward to the next chapters.



**REALTY
ADVOCATES**

24 Years in Rockridge

**Highest Sales Prices +
Lowest Commissions**

(510) 428-0757

realtyadvocates.com

A place to

**Belong
Believe**

A way to

Saint Augustine Catholic Church

400 Alcatraz Ave • Oakland, CA 94609

**Announcing a NEW Sunday evening Mass
Faith for the iPod generation!**

on the following dates

March 17th, April 21st, May 26th, and June 30th
Sundays, 6:00 p.m.

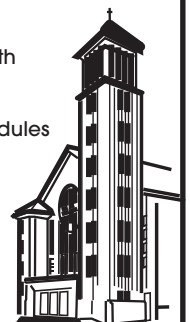
Powerful & relevant liturgy

Contemporary music - A new time for busy schedules

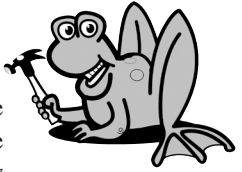
Also join us Saturdays, 5:00 p.m. Mass and
Sundays, 8:00 a.m. and 10:30 a.m. Masses

Watch us live via webcam every Sunday (8:00 a.m. and 10:30 a.m.)

Please visit our website: www.staugustineoakland.com



FROG News: Survey; DMV Plans; More...



Report: Frog Survey Results Published

The FROG survey has closed and the results are in. Summarized opinions will help guide Frog park improvements and FROG committee decisions.

Many filled out the survey online or completed paper versions handed out at the park area and greenbelt. There were 278 Frog Park patrons and community member respondents.

Results showed the following highest importance and priority ratings:

- More swings (baby and regular) at both Redondo/Little Frog and Hardy/Big Frog
- Improved crosswalks at Hudson/Claremont
- Noise reduction
- More picnic tables
- Art features that focus on Native California wildlife, native flowers and trees and frogs. There was notable interest in mosaics, slightly higher ratings for art about kids than art about dogs, and slightly higher ratings for Impressionist vs. geometric art
- Additional features receiving importance ratings but slightly lower ratings are in the online presentation and include improving the Dog Park; more events for families and children; and more green space.

Open-ended comments offered ideas for new park features and the needs for continued maintenance, a solution to the homeless in the parks and to improve, maintain and add bathrooms. Art comments suggested

historical themes, sea life, trees, interactive art, and community created art.

View the full presentation online at www.frogpark.org.

Thanks to all who shared their opinions and helped with the survey. We look forward to working on these priorities with the community. E-mail info@frogpark.org for more information or to volunteer.

— Carol Behr, FROG Chair

DMV Plan Ready For Implementation – View It Online

Wonderful news for neighbors, greenbelt lovers, Farmers Market goers, and Claremont DMV staff and patrons: The long-awaited DMV tree and park restoration will happen soon.

The final plan, created by Suzanne Schrift of MIG Inc. and incorporating ideas from our community, provides for large native trees to replace the eucalyptus, plus smaller trees that will be attractive to birds and screen the view of the DMV car enclosure, a much-needed additional picnic table, and new boulders to enhance the creekside area.

FROG Park and DMV Neighbors Association volunteers and Public Works staff recently met at the DMV to review the placement of trees, boulders and picnic table. The final plan has been forwarded to the DMV for its review and approval, necessary before any landscaping plans can be implemented. View the plan at www.frogpark.org.

frogpark.org. Be sure to visit the area where marked stakes show how it will look when finished. (Please help us keep the wooden stakes in the ground, as they will guide the construction crew when work gets underway.)

Leonora Sea, DMV Neighbors Association Chair,
Carol Behr, FROG Chair

Monthly Cleanup Changed to ‘First Saturday’

Oakland Tech’s BuildOn Club has adopted Frog Park as its spring service project. Let’s show them our community spirit: Join up to 30 dedicated BuildOn members on “First Saturdays” on Saturday April 6 and Saturday May 4 to handle park maintenance tasks not suited to the kid-friendly Earth Day clean up. Meet at Big Frog, Hardy Circle, 10 a.m.-1 p.m.

Ronnie Spitzer, FROG Treasurer and Maintenance Officer

Earth Day Celebration– Save the Date: April 20

Celebrate Earth Day at a FROG Park Family-Friendly Clean Up Saturday April 20, 9 a.m. to noon.

Join us for a fun, community and family-friendly Earth Day cleanup supervised by DMV Neighbors.


WHERE: Big FROG (Hardy Circle near Miles) or Little FROG (Redondo Avenue at Clarke)

WHO: All community members: family friendly and for kids of all ages

Bring work gloves, or use ours. Activities include playground cleaning, planting, sweeping, weeding, sifting sand, and clearing the pond and creek bed to get ready for the creek to flow again. Contact info@frogpark.org with questions or to volunteer on the organizing committee. Water and snacks will be provided. Come for half an hour or the entire morning, rain or shine. Volunteer? E-mail info@frogpark.org

Howard Ferrier, FROG Maintenance Officer and Ronnie Spitzer, Treasurer and Maintenance Officer


Next FROG Meeting:
E-mail info@frogpark.org for meeting details.



Specializing in Rockridge

THE MOTLEY TEAM

510-459-4338



Prices Rise Again in Rockridge

Closing date	BR	BA	Address	Original price	List price	DOM	Selling price
2/13/13	4	2	5815 Lawton Ave	\$639,000	\$639,000	17	\$888,250
2/13/13	3	1	6675 Chabot Road	\$750,000	\$750,000	11	\$851,000

- List to sales price in the past 60 days is 114% vs. 99% last year ·
- Properties listed in the past 6 months have sold in an average of 13 days ·
- 71% of properties sold in last 2 months sold over original list price ·
- Currently just over 1 month supply of inventory ·

Visit our website at www.eastbayhouse.com

If you're thinking of buying or selling, give us a call for a free consultation.

Building Community

from page 9

it there," she says.

As their children moved from Peralta to Claremont and on to Tech, coalitions of parents – then as now – worked to improve the curriculum at each school, Dodie reports.

Peralta and Chabot Elementary parents often combined forces with families from other parts of the city to improve Claremont and Tech. "The social circles we developed were some of the most meaningful and interesting experiences in my life.

"So much of that is the same today," Dodie says. "People say 'if you send your child, I'll send mine.' They still have that sense of community."

But she also sees differences. Her neighborhood then was "great for teens." More children walked without their parents to school. Class sizes were larger, but she says today's teachers are under more pressure.

Dodie bases that on first-hand knowledge through interaction with teachers, parents and students as a dedicated Peralta volunteer.

"Since Maceo was in kindergarten, I've usually volunteered twice a month in the classrooms," she says. She's currently doing a reading workshop for a small group of students along with six parents.

Even the gardening skills that she and Joe have lavished on their beautiful yard have gone for the greater good – including the neighborhood Easter Egg hunts held there.

She says she's "on the garden committee," but many would give her the main credit for

keeping Peralta's renowned gardens going.

"I help plan the monthly garden work days which typically draw 20 to 50 volunteers," she details for me. "I'm a resource for what needs to be done what and where, and what is and isn't a weed."

Her familiar figure, "body and health permitting," can be seen deadheading and pruning, planting and refurbishing pots, especially in the Kindergarten Courtyard.

As if that's not enough, Dodie is a mainstay of the annual Peralta auction. And this year, as last, she'll co-host a pay-to-play dinner – word has it that she's also a great cook – as part of the fundraising.

"Her commitment to Rockridge and to its public schools – Peralta, Claremont, Tech – is both long and huge," says Sonia Spindt, Peralta's Title I consultant and librarian.

"It was never just about her own kids," says Spindt, who lives in the same neighborhood and whose children went to school with Dodie's. "It's her commitment to public education and the greater good."

"It's her caring and seeing the longevity" of both Peralta and the neighborhood, echoes Laura Mytels, whose son Max will be joined by his younger brother Elliot at the school next year. Mytels, who after eight years still considers herself a "newbie," says Dodie "has such knowledge of the wonders of the neighborhood."

Dodie is thrilled that her son and daughter-in-law recently bought a house within the Peralta school borders.

"Whenever I'm feeling down," she says, "I just take a walk in my neighborhood and think of what I love about it."

Judy Berne welcomes your comments and column ideas. You can reach her at judyberne@att.net.

**March Town Hall Agenda:
Launching RCPC's New Website.
Take a look-- offer your
thoughts-- Thursday, March 21.
Details, Agenda box page 1.**

**Frank Silver
Remodeling**
Cal. Lic. #522497

146 Wildwood Avenue
Piedmont, CA 94610

Phone: 510/547-6111 Fax: 510/547-6115
E-mail: fmsprojects@sbcglobal.net
Web: www.fmsprojectsinc.com

FMS Projects, Inc.  

GRUBBCO.COM

510.652.2133
3070 Claremont Avenue • Berkeley

510.339.0400
1960 Mountain Boulevard • Oakland

**Rockridge
Optometry**
*Your neighborhood
family eyecare providers
since 1947*

Dr. Donald Sarver
Dr. Larry Sarver
Dr. Scott Yokoi
Dr. Cindy Sakai

5321 College Avenue, Oakland
510-655-3797
www.rockridgeoptometry.com

PUMPKIN HOUSE STUDIO

Rockridge design firm providing creative, livable design solutions

- Residential Remodels
- Kitchens + Baths
- Green Building Design
- Color Consulting

WE'RE IN THE NEIGHBORHOOD

Jennifer Cooper, owner
5275 James Avenue
Oakland, CA 94618
510.652.5036
pumpkinhousestudio.com



**JASON KALDIS
ARCHITECT
INCORPORATED**

510.549.3584
WWW.JKALDISARCHITECT.COM



CAT Construction
 Remodels Seismic Upgrades
 Restoration Home Repair
 Serving Rockridge, Piedmont, Berkeley
510-232-5978
 Craig Trotter, General Contractor
 CA LIC #813074
www.catconstruction.biz



Mimi's Landscaping
 Design
 Installation
 Consultation
 Construction
 Rockridge Resident
510.595.9090
 Quality service

TIRED OF MANAGING YOUR LEASED PROPERTY YET?



Let us assist you.
 Contact me for a complimentary assessment.

Caldecott **Ron Reece, Realtor®**
 Director, Property Management
 510.594.2400 x226
 CALDECOTT.COM rreece@caldecott.com



Spectacular Service
Housekeeping
 Let us create free time for you...
(510) 228-5704
 spectacularhousekeeping@yahoo.com
BONDED & INSURANCE Lic. No. 3004781
FREE REFRIGERATOR CLEANING WITH YOUR FIRST SERVICE

Neighborhood Responds to Crime

from page 4

leaflets with advice on crime deterrence and posted street placards encouraging residents to report suspicious activity to OPD. Some homeowners are installing night vision video recording cameras to assist OPD investigations.

“There’s a house on my street that has been burglarized five times in the past seven years” says Lizzie Phelps of 60th Street. “Enough is enough. We’re working together to make our neighborhood less easy of a target.”

Next month: a list of the group’s crime-fighting tips.



NAMASTE
MINI
 MEMBERSHIP
\$49
 4 YOGA CLASSES/MONTH
Make a commitment your body deserves
 BERKELEY | GRAND LAKE | ROCKRIDGE
 WWW.NAMASTEOKLAND.COM

Pothole Report

from page 7

to illegal dumping: <http://www.seeclixfix.com/oakland>.

The reply to many posts on this site for street damage was, sadly, something of a refrain: “The City of Oakland Public Works Agency has received this issue. Thank you, in advance, for your patience as we work through a backlog of pothole service requests. Unfortunately the City does not have enough funding to repave all streets in poor condition. With limited funding, our response to resurfacing requests is limited to minor pavement and pothole repairs only. Our Street Maintenance Department will assess your street and determine whether temporary measures might be appropriate. Please understand that this work may be limited to pothole or other minor repairs, and that we have many similar requests. We will do our best to respond in a timely manner. The backlog of streets in Oakland needing pavement currently is \$435 million and growing.”

In spite of the city’s disclaimer that nothing can be done, reports should be made to record the extent of the need and drive the city to make repairs before someone takes costly legal action.

— by *Dou Kinkead*, with material developed by *Susan Shawl*

COLLINS ROOFING
 Family Owned & Operated




(510) 444-2220
www.collinsroofing.com
 Quality Work • Free Estimates
 Lic # 695711

EAST BAY CHILDREN'S THEATRE

Presenting the Premiere of a Musical by Ron Lytle
Cinderella: It's a Dog's Life!

Two 1-hour shows on two Saturdays:
March 16th - Oakland Museum - 11:30 & 1:30pm
April 6th - Town Hall Theatre, Lafayette - 1 & 3pm
 Fun for the whole family! Tickets: \$12



For more about the show & tickets, visit:
ebctonline.org

RN Classifieds

Your Message Could Be Here

Your 36-word message is \$22. (Phone number counts as one word.) Mail to: **RN Classifieds**, 4123 Broadway, PMB 311, Oakland, CA 94611. April deadline is March 21.

For information: smontauk@gmail.com

Home Repair Expert

Carpentry, remodeling. Doors and windows, glass and locks, small electrical, plumbing jobs, drywall, painting, fences, decks and other odd jobs. Good rates. Rick 510/761-7168.

Tax Stress? Penelope's Aesthetics

Professional Skin Care Salon: offering a full deluxe stress reduction facial with massage and eyebrow wax for \$59. Gift certificates available. Located 2 blocks from College Ave. Call today for an appointment. www.penelopecalef.com 510/594-1552

Spectacular Service Housekeeping

We provide excellent housecleaning service with greatest attention to detail. Local recommendations. *Let us create free time for you* www.spectacularhousekeeping.com 510/228-5704. Free estimate.

Electrical Repairs & Remodels

From doorbell repair to whole-house rewiring, we've been doing electrical work in Oakland and Berkeley for over 30 years. Sutorik & Company, www.sutorikandco.com, lic#397149. 510/655-3677.

Property Management and Leasing Services

Need someone reliable, efficient and available 24/7 to manage your rental property? Bringing landlords and good tenants together is my job! Contact George Vassiliades at 510/710-6826. GvRealtor@gmail.com.

Piano Lessons in Rockridge

Study jazz, classical piano and music theory with jazz pianist and teacher with B.A. in Music from U.C. Berkeley and over 15 years' experience. All ages, levels. Contact Janet at 510/653-6783, janetjazzclassicalpiano@gmail.com.

Personal Assistant

Wish you had a Personal Assistant? I can help with your project and household or personal needs. Highly experienced, versatile, and efficient. Allow me to make your life simpler. Contact Cynthia 510/326-9985. Cd.warren@comcast.net.

Gardening Excellence

Serving Rockridge over 20 years. Friendly and personalized maintenance; expert pruning and care; garden restoration; makeovers to prepare for sale. Consultations. Non-toxic, earth-friendly practices. Reasonable rates, excellent references, free estimates. Chris 510/655-0157.

Young Adult Therapy

Now accepting clients interested in reducing academic and social pressures; creating and maintaining healthy relationships; achieving set goals; or addressing bullying, negative body image and family conflict. Call Now! 510/883-3074. www.east-baytherapy.com

North Oakland Village, Your Life, Your Home, Your Way

A membership organization, we provide services that enable elders to remain in their homes and enjoy lives that are valued, healthy and active. 5116 Broadway. 510/547-8500.

Family Mediation

Certified California conflict resolution service for individuals, couples, and groups. Local, experienced, economical. Available on short notice, and/or for longer-term support. Carol. 510/549-3319 or connectionaction@gmail.com.

TAI CHI and QIGONG

303 Hudson, Rockridge BKU Methodist Church. Thursday, 9:30am and Saturday, 9:00am. Learn Tai Chi principles. Cultivate health through this ancient gentle exercise. Visit our website www.harmonytaiji.com Email harmonytaiji45@gm,ail.com. Phone 415/786-2469.

Resume Writing

A marketing pro will advocate for you with imaginative layouts and high-energy writing to get you more interviews. Specialize in executives, professionals, and people in career transition who must present their best. 510/590-0110, marilyn@deltastrategies.com.



**PETERS
DESIGN
- BUILD**

Kitchen, bath, window, door, additions
& Design-Build home renovation

www.petersdesignbuild.com

Tel. 510.2076366 or 925.890.5080



Darin J. Worm

BROKER

510.504.4960

djworm@centurioninsurance.net

Centurion Insurance Agency
Commercial + Personal + Life + Health

*An Independent Insurance Brokerage
providing cost effective, comprehensive
Insurance products and services
since 1947.*

www.centurioninsurance.net

Lic. #0670129

There's a
new broker
in town.

Susan Bernosky
**Strahan
Insurance
Services, Inc.**
510-450-9051



Strahan
INSURANCE SERVICES, INC.

Shopping? Find it in Oakland!

E-mail *Rockridge News* Community Calendar items to: joellis1@hotmail.com, phone 653-3210 (after noon), or mail to: *Rockridge News* Community Calendar, 4123 Broadway, PMB 311, Oakland, CA 94611. Deadline is the next to the last Tuesday of the month.

Compiled by Jo Ellis

COMMUNITY CALENDAR

Neighborhood Crime Prevention Council (NCPC)

Residents and business members engage in discussions about crime and public safety with representatives of OPD. 2nd Thursday each month, 7pm. Rockridge Library, upstairs meeting room, 5366 College Ave. Confirm mtg. info at www.rockridgencpc.com or chair@rockridgencpc.com.

Rockridge Branch Library

5366 College Avenue, 597-5017

Find out how your library card allows you to get free or discounted passes to museums and cultural institutions with the "Discover & GO" program. Some participating partners are the Asian Art Museum, the Aquarium, Exploratorium, Oakland Museum, Cal Shakespeare Theater, and Yerba Buena Ctr. for the Arts.

FOR CHILDREN

- **Family Story Time:** Stories/songs/rhymes (to age 5); Saturdays, 10:30am.
- **Pre-School Story Time:** (ages 2 to 5); Thursdays, 10:30am.
- **Toddler Story Time:** (up to age 2); Thursdays, 10:30am, upstairs.

All story times followed by Play Time; parents and caregivers invited.

SPECIAL EVENTS:

- **Women's History Treasure Hunt:** multi-level do-it-yourself library skills treasure hunt. Tues, 3/26, 6 to 7:45pm. Get tools and materials at the Children's Desk.
- **Gallery Art Show of Oakland Public Library Employees:** from 3/5 to 3/30. Children can find artworks by librarians they know.

FOR TEENS

- **Teen Advisory Board:** (ages 14-18) Advise the library how to better serve teens. Get community service credit for school. Snacks provided. 1st Sat. each month, 1-2 pm. Confirm: 597-5017.
- **Rockridge Ninjas:** watch Anime. 3/12 and 4/9 from 5-6:30 pm.
- **Teen 'Scape:** Play video and board games; make crafts; light snacks provided. Every Wed., 2 to 4pm. Info: Vicky Chen, 597-5017.

FOR ADULTS

- **Writers Support/Critique Group:** All writers welcome. Bring 17 copies of up to 5 pgs. (double-spaced, MS margins) of any prose for onsite reading/discussion (also welcome to come empty-handed). Third Saturday each month; 1 to 5pm. Sponsored by the California

Writers Club, Berkeley branch. Info: 420-8775 or Writefox@aol.com.

- **Lawyers in the Library: Free legal advice and referrals.** First Tues. each month (2/5, 3/5), 5 to 7pm. (Advance sign-up starts 4:45pm at adult reference desk). Volunteer lawyer leaves before 7pm if no more people present. **Note: no lawyer on Apr 2 due to city facilities closure (furlough) day.**

ART EXHIBITS (subject to change; call to confirm)

Gallery:

Mar: Oakland Public Library Staff Art Show.

Apr: Oakland Art Association show.

Lobby Display Case:

Mar: Oakland Public Library Staff Art Show.

Apr: **Carla Dole:** Handmade books.

LIBRARY HOURS

Tues, 12:30 to 8pm.

Wed., Thurs. and Sat. 10am to 5:30pm.

Fri., 12 to 5:30pm.

Closed: Sundays and Mondays.

School Fundraisers

Help to make up for the lack of public funding that would provide our local schools with art, music language and science programs; field trips; gardens; and many other enrichment programs. Your generosity will be rewarded with exciting Auctions, great food and entertainment. Join your friends and neighbors and attend one or more of the following events:

- **Chabot Elementary Online Auction:** Now through March 7, and **Gala** (with live and silent auction) on Saturday, March 9, starting at 5:30pm at the Scottish Rite Temple, 1547 Lakeside Dr. (across from Lake Merritt). Tickets and more info at: www.chabotelementary.org/calendar/auction.
- **This is It! Oakland Tech Auction and Party:** Sat., March 16, 6 to 10:30pm, at Uptown Body and Fender 401 26th St. Donations of merchandise and services are still accepted. To purchase tickets and more info, **see story page 5.**
- **4th Annual Pancake Breakfast Fundraiser for Claremont Middle School. Saturday, Apr 6;** four seatings: 8, 9, 10 and 11am; student art; live music and the opportunity to tour the classic building. Rockridge Masonic Hall, 5449 College Ave. For tickets and more info, **see story page 4.**

Jazz at the Chimes

Two-time Grammy Award winner violinist **Mads Tolling** with **The Mads Tolling Quartet.** Sunday, Mar 20, 2pm; followed by artists' reception and refreshments. Tickets at the door (cash only) beginning 12:30; doors open 1:30pm; \$15 general; \$10 seniors (60+) and students - for concert and reception. More information on Mads Tolling at www.madstolling.com. The concert series features Bay Area jazz musicians in a landmarked Julia Morgan venue. Chapel of the Chimes, 4499 Piedmont Ave. Wheelchair accessible. Free parking. Info: chimesjazz@gmail.com or 654-0123.

Wisteria Ways House Concert

VidyA: translates the language of South Indian classical (Carnatic) music into the idiom of Jazz. Led by saxophonist, **Prasant Radhakrishnan** with **David Ewell** (bass) and **Sameer Gupta** (Drums). Saturday, Apr 6, 8pm (door opens 7:30pm) Inside venue; not wheelchair accessible. \$15-20 donation for musicians (cash only at the door). 383 61st Street. For reservations

(highly recommended), RSVP to info@WisteriaWays.org or 655-2771.

Square Dance in North Oakland

Music by **The Squirrelly String Band.** Calling by **Jordan Ruyle** (with occasional guest performers). 1st and 3rd Fridays each month, 8 – 10pm. All levels welcome; all dances taught on the spot. \$5-10 sliding scale donation. The Niebyl-Proctor Library, 6501 Telegraph Ave. Info: <http://squirrellystringband.com>.

North Oakland Senior Center

Programs include: Arts/crafts; health counseling; dancing and exercise; trips, tours and theater outings; Alzheimer's Caregivers support groups, computer classes/more.

- **AARP Tax Help:** Thursdays, through April 11. To schedule an appointment: 597- 5085 or come to the office. Annual \$12 membership entitles seniors 55 and older to discounts on activities and trips. Mon. – Fri., 9am to 4:30pm. 5714 Martin Luther King, Jr. Way. Subscribe to "The North Oakland Senior Times" for full schedule of classes/events, lunch menus, and volunteer opportunities. Info: 597- 5085.

Temescal Farmers' Market

Open Sundays, 9am to 1pm (all year). Locally grown fruits and vegetables; fresh ranch eggs; home-made bakery items; fresh cut flowers; unique prepared foods, fresh locally caught fish, handcrafts and more. Sample the goods; meet the grower; learn about unique food varieties and cooking tips; and listen to live music. **Bring your own reusable bags.** 5300 Claremont Ave. (off Telegraph) at DMV parking lot. More about Certified Farmers' Markets at urbanvillageonline.com.

Land Use Committee

from page 3

RCPC believes the site would be an appropriate location for some residential development. Each of these scenarios, however, requires the cooperation of either AC Transit or the property owner (which is not Safeway). Thus far, neither has agreed.

Responses to comments on the DEIR are likely to be released in late spring, followed by Planning Commission consideration of project approval, perhaps as early as June.

College Preparatory School Expansion Proposal 6100 Broadway

As noted in the February Rockridge News, the city gave administrative approval to a use permit modification to increase the school's enrollment "cap" from 340 to 375 students. Neighbors appealed that decision to the Planning Commission. At its February meeting, the RCPC board accepted the Land Use Committee's recommendation and gave qualified support to the appeal. RCPC is sending the city a letter expressing its position on the appeal, which will be heard in March.


Norman H. Burg, DDS

General Dentistry

(510) 652-1517

5700 Broadway, Oakland

A Prevention Oriented Practice



Terry Kulka & Julie Bartlett
 Number of Homes Sold: **Over 400**
 Homes Sold in Rockridge: **Over 80**
 Value of Working with Realtors who have over 35 years Experience? **PRICELESS**

Call Today! (510) 682-5917
 RockridgeHomeSales@Gmail.com
 www.Rockridge-RealEstate.com

COLDWELL BANKER

Over 400 homes sold - Experience Counts

aboutface&body
 dayspa oaklandberkeley
 serving you since 1981

AVEDA PRODUCTS
 Now offering men's waxing

3190 college avenue
 at alcatraz
 berkeley, ca 94705

p 510.428.2600
 www.aboutfaceandbody.net

sun-tues 10:30-5:30
 wed-sat 10:30-8:00

Curves
 Rockridge

Located on Market Hall's Lower Level
 Entry on Shafter Avenue

510-655-8808

Open 7 Days www.curvesrockridge.com
 Mon- Fri 6:00 -7:30 Free Parking!
 Sat & Sun 8:00 - Noon Across from BART

KEVIN BROWN
 Broker

654-8707 or 593-4780

PROVIDING
 Professional,
 Full Service
 Real Estate Brokerage
 To Rockridge Clients
 For Over 32 Years.


SPECIALIZING IN

- ❖ Residential Sales
- ❖ Income Property
- ❖ Commercial
- ❖ Property Management

Better Homes Realty
 5353 College Avenue
 Oakland

Living? Love it in Oakland!

Flush with Confidence



License #754966

BETTER LIVING
 through Modern Plumbing

(510) 465-3000

www.pipespy.com

ROCKRIDGE MARKET UPDATE

Since January 1, 2013 all the sales in Rockridge have had multiple offers with 25 offers on one house setting a bit of record of late. The homes have been selling at approx. 16% over list. As you can imagine, that equates to many tens of thousands extra for sellers. Call me for a more detailed discussion. Cell 510-612-2547

FOR SALE ROCKRIDGE

Roanoke Rd, (Berkeley) Call for pricing*
 2 Bed/ 1+ Bath
 Fabulous European Feel to this 2 story home. Loads of updating & newer systems. Rockridge feel w/Berkeley Schools

SOLD IN ROCKRIDGE

5815 Lawton Ave \$639,000
 4+ Beds/ 2 Baths
 Craftsman Bungalow on quiet tree lined street. The perfect home for all of your remodeling ideas!
 Award Winning Chabot Elementary School
www.5815Lawton.com

COMING SOON IN ROCKRIDGE

Shafter Ave. Call for pricing*
 2 Beds/ 1 Bath + a Studio in Back
 On the cozy side, but very well located. Bring your ideas and make it yours.
Award Winning Chabot Elementary School

*NOTE: Because of Rockridge Newsletter lead time, all prices are not available at print deadline.



Ron Kriss, Broker
Lawton Associates
 510-547-5970 Ext. 55
 ronkriss@jps.net

"#1 in Rockridge Real Estate"
 Over 100 Homes Sold in Rockridge
www.LawtonAssoc.com

Playing? Start in Oakland!

MCGUIRE
 REAL ESTATE

ELMWOOD
 2991 College Ave
 510.883.7000

www.mcguire.com